

HARTFORD GUIDE

A Look At Hartford & The Greater Hartford Region



**Special
Transportation
Edition!**

Fall 2021 – Winter 2022



DISCOVER THE WADSWORTH

CURRENT/UPCOMING EXHIBITIONS

Leonardo Drew: Two Projects

Front Lawn: through November 14, 2021 | **Main Lobby:** through January 2, 2022

Christina Forrer / MATRIX 187

Through January 2, 2022

By Her Hand: Artemisia Gentileschi and Women Artists in Italy, 1500-1800

September 30, 2021—January 9, 2022

Milton Avery

February 24—June 5, 2022

The Wadsworth is your place to connect with amazing art.
You will find us in the heart of Hartford with our castle doors open.



WADSWORTH ATHENEUM MUSEUM OF ART

600 Main Street, Hartford, CT

| thewadsworth.org

| (860) 278-2670

Hartford Guide

A Look At Hartford And The
Greater Hartford Region
FALL 2021 - WINTER 2022

TABLE OF CONTENTS

Connecticut CSB Open for Business.....	5
Where to Go and How to Get There	7
Bradley International Airport Update	8-9
Riverfront Recapture's New Frontier.....	10-11
Poppin' on Pratt Street	12-13
Brainard Airport	14-15
Hartford Development Update	16-17
Parkville Market's World of Choices	19
Hartford Live!	21
Hartford Holidays	23
Downtown Hartford Map	24-25
Greater Hartford Breweries	27
Town Profiles: Hartford.....	29
Hartford Attractions.....	31-37
Town Profile: Bloomfield.....	39
Town Profile: East Hartford	40
Town Profile: Newington	41
Town Profile: Wethersfield	42
Town Profile: West Hartford.....	43
Town Profile: Windsor	43
Greater Hartford Accommodations	44-45
Getting Around Greater Hartford	47

ON THE COVER: The free DASH Shuttle makes it easy to explore downtown Hartford (see map, pages 24-25)



Hartford Guide

is published by
Hartford Publications

563 Franklin Avenue, Hartford, CT 06114
Tel: (860) 296-6128

Site: HartfordPublications.com
e-mail: hartfordnews@aol.com

Co-Publishers

Mike McGarry & Jon Harden

The publisher does not assume responsibility for errors, omissions and changes in advertising or editorial material. Advertising rates are available upon request. Entire contents are copyrighted and no portion may be reproduced in whole or in part by any means without specific written permission of the publisher. All rights reserved.

Copyright 2021

Editorial Board

Terryl Mitchell Smith
Editor in Chief, Director of
Marketing & PR, CRDA

Michele Hughes
Director of Sales,
Conn. Convention Center

Laurie Pringle Waddell
Senior Property Manager,
Lexington Property Management

Randel P. Davis
Deputy Director, Development
Services, City of Hartford

Shannon Mumley
Director, Small Business Dev.,
Hartford Chamber of Commerce

Best-of-the-Best Award-Winning Care

Saint Francis Hospital, a member of Trinity Health Of New England, continues to provide award-winning, state-of-the-art, best-of-the-best care with the ultimate convenience and value.

For the ninth time, Saint Francis has been named an **IBM/Watson Top 100 Hospital** and is ranked among the top 15 major teaching hospitals in the United States. Currently, Saint Francis is the only hospital in Connecticut to hold a spot on this prestigious list.

Saint Francis has also been recently named to **Newsweek's list of World's Best Hospitals**, a recognition for consistent excellence, distinguished physicians, top-notch nursing care, and state-of-the-art technology.

In the Spring of 2021, Saint Francis earned an **'A' Safety Grade from The Leapfrog Group**—the only hospital in Connecticut to earn an 'A' Safety Grade for the last six consecutive grading cycles. The 'A' through 'F' Safety Grade is awarded based on a hospital's performance in preventing medical errors, injuries, accidents, and other harms to patients in their care.

Saint Francis has also earned **The Joint Commission's Gold Seal of Approval®** and the **American Stroke Association's Heart-Check mark for Primary Stroke**.

These awards are among a growing list of recognitions from national organizations including U.S. News & World Report, Consumer Reports, the American Heart Association, the American College of Surgeons, Centers for Medicare and Medicaid Services, and more.

Saint Francis Hospital—safe, innovative, and value-driven. World class care, where you live.



Watson Health
100 Top Hospitals® 2021



American Heart Association
American Stroke Association
CERTIFICATION
Meets standards for
Primary Stroke Center

Greater Hartford's Meetings & Events Industry OPEN FOR BUSINESS!

Greater Hartford is open for business and the Connecticut Convention & Sports Bureau is booking meetings and sports events for the coming months and years.

The Capital Region has long been a desirable site for major events, and location is one reason why. Hartford lies midway between New York City and Boston, offering easy access from car, bus, train and plane. "Over 23.5 million people live within a 2½-hour drive of Hartford – a major selling point for meeting planners and sports promoters and their attendees," explains Bob Murdock, President of the Connecticut Convention & Sports Bureau (CTmeetings). "Add to that the scenic beauty of the region and the abundance of historic, cultural and recreational activities nearby and it checks off lots of boxes."



Hartford Athletic fans celebrate a goal during a home game at Dillon Stadium.

Greater Hartford is even more appealing to planners than are many other locations in the U.S. Recognized nationally, Connecticut has led the way in safely getting back to business, including being one of the highest vaccinated states. Hotels and restaurants are committed to health and cleanliness protocols to ensure safe meetings and experiences. Many redesigned their meeting and event spaces to include more outdoor and indoor options and enhanced services with guests and meeting attendees in mind. Earlier this year, the Connecticut Convention Center achieved the Global Biorisk Advisory Council® (GBAC) STAR™ accreditation, the gold standard for prepared facilities implementing the stringent protocols for cleaning, disinfection, and infectious disease prevention in its facility.

The Connecticut Convention & Sports Bureau has remained open since the start of the Coronavirus and continues to work with partners in state and local communities to advocate and support the meeting and hospitality industries. This includes its establishment of its "Hospitality Heroes Recognition" program that showcases hospitality industry

members for their innovative business initiatives and community support despite COVID challenges. Among its first group of honorees is the Max Cares Foundation, a nonprofit organization established by the region's Max Restaurant Group (MRG). Since the onset of the pandemic, Max Cares Foundation has been a leader in safety measures for MRG's employees, guests and the community, taking steps to ensure that other hospitality industry workers and area residents have not gone without proper nutrition.

This past spring and summer, most of the events business in our region were outdoor sports events, managed with careful social distancing protocol. Among those were the NCAA DI, II & III Men's Lacrosse Championships and the Women's Soccer Team USA vs. Team Mexico WNT Send-Off Series in the final competition before the Olympics – both at Pratt & Whitney Stadium at Rentschler Field, Hartford Yard Goats baseball at Dunkin Donuts Park, Hartford Athletic soccer at Dillon Stadium, and the PlayFPN Summer Nationals softball tournament in Windsor.

In September, the Connecticut Convention Center reopened indoor activities with ConnectiCon, Connecticut's oldest fan run convention and one of Hartford's largest events. And, it is exciting to see Hartford's concert venues and parks welcome back returning and new outdoor festivals and events.

If you are involved with a professional, religious or fraternal organization, or an athletic program that might consider holding a regional, statewide or national event anywhere in our state, please contact the Connecticut Convention & Sports Bureau. The office's experienced staff can help choose the venues and services that best suit the group. Contact President Bob Murdock at robertm@CTmeetings.org or 860-882-1103. Or go to the website www.CTmeetings.org



Dressed up with somewhere to go: ConnectiCon at the Connecticut Convention Center in September 2021. (Photo by Michael Busemer, BoZtoN Photography)

Coming Soon



Linus Plimpton House ***847 Asylum Avenue***

Since 2004, NINA and its partners have invested over \$12 million in Asylum Hill, creating jobs for Hartford residents and building homes while preserving the neighborhood's Victorian heritage. Come be part of the renaissance in Asylum Hill. For more information, please visit www.ninahartford.org

NINA
Revitalizing Asylum Hill



NINA - 20 Sargeant Street - Hartford, CT 06105 - 860-244-9390

Where to go and how to get there



TOP: The new Parkville Market in Hartford.
MIDDLE: The free Dash Shuttle serves Downtown Hartford.
BOTTOM: Site of Riverfront Recapture's future park on the Hartford-Windsor town line.



The two main themes of this edition of the *Hartford Guide* are destinations and transportation. While the region, and the rest of the world, have been focused on the still lingering COVID-19 pandemic, major developments have been moving ahead in Greater Hartford. Bradley Airport is moving forward with a major expansion and renovation. Riverfront Recapture is adding a new park. Parkville Market has become a regional destination. Link scooters have made getting around Hartford more fun and environmentally-friendly. Old favorites like The Bushnell, TheaterWorks and Hartford Stage are coming back to life following the pandemic. Read on and discover why it's an exciting time to live, work and play in the Greater Hartford region.





Points of Distinction

flexibility in travel options to new and existing destinations. Breeze Airways, based in Salt Lake City, Utah, launched new nonstop routes to what they considered to be underserved markets from Bradley. Destinations include Charleston, SC, Columbus, OH, Norfolk, VA, and Pittsburgh, PA. Minneapolis-based Sun Country Airlines has created a nonstop route to Minneapolis and Orlando out of Bradley. However, the real feature to Bradley's expansion is the new Ground Transportation Center (Transportation Center), currently under construction. On track to open in the spring of 2022, the Transportation Center will transform how patrons experience the facility.

No more waiting for a shuttle to transport you out of the airport to the various rental car providers. Consolidation of all rental car services in the Transportation Center will allow for fast and uncomplicated accessibility to car pick up, all within short walking distance from the main terminal.

If your plans include the use of public transportation options, the Transportation Center will house a dedicated area for high-frequency buses connecting the airport to the rail lines and other regional transit options. The Bradley Flyer Express provides a direct route to and from the Connecticut Convention Center where travelers can hop on the DASH, Hartford's FREE shuttle, that stops at downtown restaurants, hotels and attractions.

Whether you're picking someone up or dropping them

off, on a day trip or leaving for vacation, Bradley offers on-site public parking at its garage and surface lots. Eight hundred and thirty new covered and uncovered spaces are being added to the facility's existing inventory.

Customer Focus

When you fly, the airport is the first impression of your destination and last memory as you leave to return home. Bradley recognizes the importance of setting the bar in making the visitor feel welcome at arrival and glad they came. The airport's enhancements are made with the customer in mind and what will make for a pleasant trip.

Bradley's new mobile food ordering service and Sunflower Hidden Disabilities program assists individuals with hidden challenges, such as autism, chronic pain, anxiety, visual or hearing impairment or other challenge not immediately recognizable to others, as they make their way through the airport. The sunflower lanyard discreetly alerts the airport community that an individual may need a little extra assistance, direction and patience while at the facility. Participation is voluntary and the nature of one's challenge need not be disclosed. The lanyards are complimentary and available at the airport's information center.

In the age of COVID-19, airport staff continues to focus on passenger safety and have placed significant emphasis

on specialized cleaning and new precautionary measures. These efforts have earned Bradley a COVID-19 health accreditation from the Airports Council International World.

Counted Among the Best

Bradley International Airport's enduring goal is to make travel easy, introducing upgrades, new initiatives and programs, new routes and additional amenities. The efforts have been rewarded with a number of customer acknowledgements.

Bradley is named a 2021 top 10 best small airport by one of the leading travel publications, *USA Today*. The facility took eighth place in the *Condé Nast Traveler* magazine Best Airports in the U.S. 2020 Readers' Choice Awards and has been recognized by the magazine's readers for several years. In addition to the wave of new flights, passengers found the convenient, on-site daily and overnight parking, restaurant choices, free Wi-Fi, abundant charging stations and its mid-size accommodated their needs and made maneuvering through the complex easier and more comfortable than larger hubs such as New York and Boston.

Based on customer reviews, travelers who use Bradley "Love the Journey".

We make it easy for you to get there from here:

The Bradley Flyer and the "Dash"



Why Uber or Lyft to and from the airport when you can take Connecticut Transit's direct and cheaper option to downtown Hartford, the Bradley Flyer (Flyer). You can catch the Flyer right outside of the baggage claim area of the airport terminal for the cost of one-way local bus fare, \$1.25, seven days a week. The Flyer runs approximately every hour with a 30 minute ride to the Connecticut Convention Center. All flights arriving and leaving from Bradley International Airport are displayed on monitors on the meeting room level and lobby of the convention center.



From the Connecticut Convention Center, the "dash", the city's free downtown area shuttle, provides access to hotels, restaurants and attractions. The free circulator runs Monday – Friday from 7:00 a.m. to 7:00 p.m. departing every 15 minutes from the various route stops. An extended schedule may include Saturday, Sunday and evenings for major downtown events. Extended service hours may be requested by convention center groups.

You can check the schedules of both the Bradley Flyer and the "dash" at the CTTransit website and Facebook page.

Riverfront Recapture's Martha Conneely leads a tour of the organization's future park on the Hartford-Windsor town line.

Riverfront's New Frontier

The river that once divided the Greater Hartford region is now uniting it.

In its four decades of existence, Riverfront Recapture has recaptured more than just a riverfront. It has also recaptured the Greater Hartford region's sense of unity. Now the organization has taken a big step toward connecting the region physically as well as spiritually.

This April, Riverfront officially announced it had purchased a 60-acre property along the river, north of Riverside Park and just south of Windsor. In addition to Riverside Park, Riverfront currently manages Charter Oak Landing and Mortensen Riverfront Plaza in Hartford and Great River Park in East Hartford, along with walkways and paths connecting them all.

The new park, which doesn't yet have a name, is adjacent to Windsor Meadows State Park. From this park, trails extend north through the Windsor Meadows and east over the Bissell Bridge to connect with trails in South Windsor and East Hartford. Riverfront is currently looking into expanding its trail system south into Wethersfield and even east into Glastonbury.

Riverfront Recapture's expansion and success only seems natural. Developing the vast recreational opportunities offered by New England's longest river seems obvious. Binding the region together with its most prominent natural resource seems perfectly logical. However, a half-century ago, thinking of the Connecticut River as one of Greater Hartford's prime assets was not considered natural, obvious or logical. In fact, most people considered it preposterous.

Back to the Source

Riverfront Recapture was founded in 1981. At that time, most motorists whizzed over the river with barely a passing glance at the water flowing beneath. Maybe some had personal memories of the disastrous floods of 1936 and 1938, after which Hartford reinforced its dike system and created a literal wall between the river and the city. Two decades later, I-91 was built between the river and the city, and the former was almost completely forgotten by the latter.

In the late 1970s, a growing number of people started to give the river a lot more than a passing glance. Thanks to the growing environmental movement and the rapid decline of New England's manufacturing base, the river was a lot cleaner by then, and people were reimagining what a modern city could and should be.

One of those reimagining sessions was held in 1980 at the Old State House. It was sponsored by Travelers Insurance, the Downtown Council, the City of Hartford, the Connecticut River Committee, Connecticut River Watershed Council and the Hartford Architecture Conservancy. The consensus was that reconnecting the region with the river was not only feasible but vital to greater Hartford's future. To accomplish that mission, Riverfront Recapture was created the following year.

The organization soon set about transforming ideas into reality. In the 1980s, Great River Park in East Hartford and Charter Oak Landing in Hartford were created. Riverside Park

in Hartford was cleaned up and renovated. In 1986, Joe Marfuggi was hired as Riverfront's CEO, a post he would hold for almost three decades. Marfuggi was soon directing Riverfront's biggest project to date, Mortensen Riverfront Plaza. The plaza would be Riverfront's centerpiece, a place for festivals, concerts and numerous other events. The new plaza would be connected to East Hartford by a pedestrian promenade along the Founders Bridge and to downtown Hartford by a landscaped platform over I-91.

Riverfront Plaza opened in 1999. A pedestrian bridge linking it to Constitution Plaza was opened a year later and the promenade along the Founders Bridge was completed in 2001. In the two decades since then, Riverfront has hosted countless events at its four parks and developed a highly popular community rowing program. Bit by bit, the parks have been connected by paved walkways. Now a new park will soon open with connections to the rest of the region.

Riverfront's Future Park

Riverfront Recapture's future park will be located off Meadow Road on the Hartford-Windsor town line, between Meadow Brook to the south and Decker Brook to the north. The park's centerpiece will be Garmany Cove, which will be built by reconfiguring an existing wetland to accommodate kayaking, paddle-boarding, canoes and even dragon boats. The wetland's current narrow outlet into the Connecticut River will be expanded to several hundred feet. There will also be dedicated areas for fishing, a performance pavilion, and 10 acres set aside for commercial development. The existing property, most of which was open farmland, will be landscaped with trees to create walking paths and hiking trails. The new park will be connected to the rest of Riverfront's parks and trails by the Joe Marfuggi Riverwalk, which will extend 2.5 miles southward to Riverside Park. It will include bridges over both Meadow and Decker Brooks and connect with the Windsor Meadows trail system.



Riverfront Recapture's new park will be located off Meadow Road (top, right of center) on the Hartford-Windsor town line, between Meadow Brook (left) and Decker Brook (right). Garmany Cove will be developed from an existing wetland for various aquatic activities and its existing outlet into the Connecticut River will be greatly expanded.

Joe Marfuggi Riverwalk



It is especially fitting that the new walkway connecting Riverfront Recapture's network of trails and parks along the Connecticut River with another network of trails in Windsor will be named after Joe Marfuggi. Connections were what Joe was all about.

Before becoming Riverfront's CEO in 1986, Marfuggi already had a distinguished career as an educator, journalist, political strategist and community activist. He was exactly the man Riverfront needed, a man who could raise funds at a corporate meeting in the morning and oversee a fishing tournament in the afternoon, a man who wasn't afraid to take chances, like a rubber duck race fundraiser on the river. Most paid off, some didn't. Joe kept at it until his retirement in 2015. By then, Riverfront had become one of Connecticut's top destinations and a national model for community redevelopment. Joe passed away in 2018.

Friends, family and colleagues raised about half the funds needed to build the paved, 12-foot wide, 2.5 mile long walkway. They are hoping to make it as interactive, fun and accessible to all as Joe was, with whimsical art installations and rest sites for quiet reflection. Construction is scheduled to begin in Spring 2022, and should be finished by the end of the year.



**IT'S
ON AND
POPPIN' ON
PRATT!**

With salsa dancing, fashion shows, concerts, pop-up markets, yoga and more, Pratt Street is setting the pace for the resurgence of Downtown Hartford.



Do you feel like an evening of dancing at a salsa social, then working out any kinks from all the gyrating with a yoga class the next morning? Maybe you would rather sit back and listen to a live band while enjoying a bite to eat from one of the city's unique eateries. Whatever your preference, you can find it in the heart of downtown on Pratt Street. While many of the facades on the one block pedestrian corridor exemplify Hartford's historic character, the transformation of this once exclusive residential street into an entertainment district suits contemporary city dwellers just fine.

Almost anything can pop-up on Pratt. Local merchants featuring special coffees and teas, vintage clothing, handmade all natural and vegan skin care products, one-of-a-kind jewelry, gift cards and posters created by Connecticut artist line the sidewalks as patrons enjoy pizza, a sandwich, a smoothie or a glass of wine at the café-style setting on the cobblestone street. Events and activities for all ages are scheduled throughout the year. The fall music series hit a high note with folk, classical, pop, rock and hip-hop lovers.

Visit Hartford.com, Hartford Prints! Facebook event or prattst.com for more information on "P.O.P" events.



Get Connected To The City With Link

Hartford prides itself on being a "walkable" city. In fact, it's one of the many features that attracts young, talented professionals. However, there are times, at the end of a long day, riding to your destination is an opportunity you can't resist.

LINK e-scooters service was launched in Hartford in April to such great success that it's grown the initial fleet of 100 to 250 to meet the increased demand. Hartford's program averages four trips per day, per vehicle, with over 50,000 rides in Hartford. Usage is even higher on weekends.



LINK has deployed thousands of scooters in over 20 cities, from Seattle to Rome and is known for its record of compliance and safety. The electronic vehicles are equipped with custom-engineered Artificial Intelligence (A.I.) or Vehicle Intelligence Systems that intuitively perform maintenance repair of the electronic systems. This technology along with Geofencing ensures scooter safety and protects pedestrians by keeping riders out of restricted zones. LINK adheres to frequent sanitation protocols to prevent the spread of COVID-19.

Whether you're a resident or visitor, LINK provides the freedom and convenience to travel around the city without having to wait for a bus or UBER. Just download the LINK mobile app and scan a scooter's QR code. LINK also has accommodations for riders without smartphones. It's \$1 to unlock a scooter and 35 cents per minute. Hartford residents receiving, local, state, or federal assistance can qualify for a 70 percent discount under the "LINK-Up" program. Visit <https://www.link.city/hartford>



Located on 201 acres in the southeast corner of Hartford, Brainard Airport has three runways and two helipads.

Brainard Airport

Hartford's Not-so-Hidden Gem

It is a unique occurrence for a small city to have its own airport, but it is an amenity that makes an appreciable contribution to the capital region's economic base. The installation is responsible for 426 jobs, \$17.1 million in labor income, \$54.8 million in total output and \$3.36 million in state taxes.

Hartford-Brainard Airport (Brainard) is located three miles from the city's central business district. It was designed as a general access facility and used by the public. It is also a designated reliever facility within the FAA's National Plan of Integrated Airport Systems. Approximately 15 percent of the airport's total operations is for business purposes. Brainard is owned and operated by the Connecticut Airport Authority (CAA).

Established in 1921, it is named after Hartford Mayor

Newton C. Brainard and known to be the country's first municipal airport. Brainard's rich history also includes it being the first stop on Charles Lindbergh's national victory tour after completing his successful solo transatlantic flight. "Hartford is to be complimented on foreseeing the future of aviation, and breaking the ice, so to speak, by putting in a good airport," stated Charles Lindbergh during his address to the crowd. That "good airport" was also the landing site for Air Force One during President Biden's October visit to the state.

Brainard's value has not been lost on the aviation industry. Groups such as the Aircraft Owner and Pilot Association used the airstrip when it held two conventions at the nearby Connecticut Convention Center (CTCC). The airport has been an asset in the pursuit of aviation-related

conferences and conventions for the CTCC, most recently the National Business Aviation Association is considering Hartford for as future conference destination. The facility is home to 12 aviation-related businesses including a flight school, an aero-tech school, and aircraft maintenance services.

The CAA is exploring development opportunities for Brainard, a few studies have been conducted to examine runway additions, facility expansion and aviation-related business prospects. Until definite plans for the airport have been determined, Brainard will continue to be a diamond in the rough in Connecticut's capital city.



Early visitors to Brainard Airport included Charles Lindbergh, Amelia Earhart and Connecticut's first licensed female pilot, Mary Goodrich of Wethersfield. Every year, Brainard holds Women in Aviation Day to encourage young girls to take to the air.



Sleek jets like this routinely fly in and out of Brainard Airport, which is only three miles from downtown Hartford. The airport also plays host to numerous events, such as the B-17 fly-in below.



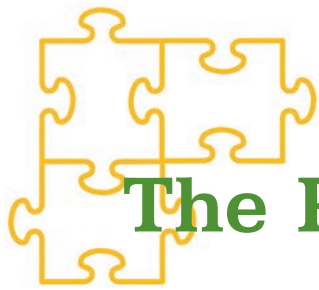
Organizations & Companies at Brainard Airport

Connecticut Airport Authority (CAA) Organizations

CT Aero Tech School
State Police Aviation Unit
Connecticut State Police Central District Headquarters
Division of Emergency Management & Homeland Security
State of Connecticut Office of Health Preparedness & Response
Civil Air Patrol, Connecticut Wind
Connecticut Airport Authority

Private Companies

Hartford Jet Center
 Ground Control, Fuel & Parking, Charters, Aircraft Sales, Concierge, Lounges
ATP School
 Commercial Pilot Training
Learn To Fly
 Recreational & Professional Pilot Training
Premier Flight Center, LLC
 Recreational & Professional Pilot Training
Exxel Avionics
 Aircraft Maintenance & Repair
Total Aircraft Parts, LLC
 Aircraft Sales, Parts & Maintenance (Airframes & Engines Only)
VIP Avionics
 Aircraft Maintenance & Avionics Repair
NCPS Research, LLC
 Applied Technology Research
Sutton James Inc.,
 Aviation Insurance
Doyle Group
 Private Lobbying Firm
Flight Deck Bar & Grill
 Coming in 2022



HARTFORD'S DEVELOPMENT PUZZLE: The Pieces Are Coming Together

During the pandemic, Hartford moved closer to achieving two goals that were set for it back in the 1990s. The first was the demolition and rebuilding of the city's major public housing projects. The second was increasing downtown Hartford's residential population to the "critical mass" necessary to attract shops, restaurants and other amenities needed to make the city's central business district a thriving, self-sufficient neighborhood.

Bushnell South



Former state office building at 55 Elm Street

The Village at Park River



Village at Park River homes

This September, a joint ribbon-cutting/groundbreaking ceremony was held to mark the completion of Phases I and II of the new Village at Park River community and the start of construction on Phase III. Village at Park River is a redevelopment of Westbrook Village, the last of Hartford's old-style housing projects, into a new, mixed-use community. The 40-acre site is located along the north branch of the Park River in the north-west corner of the city near Bloomfield and West Hartford. When complete, Village at Park River will have over 400 units of mixed-income townhouse-style homes, approximately 100,000 square-feet of new office and retail space, bike paths, community gardens and playgrounds, a community building with a fitness center and meeting space, and a central park.

When Hartford was in its heyday as "The Insurance Capital of the World," companies would spare no expense to construct home offices that projected wealth and stability. As a result, downtown Hartford seems to have an architectural gem on every corner. Now some of these handsome buildings are slated for redevelopment in an ambitious project along the edge of Bushnell Park known as Bushnell South. Although home to the State Capitol Building and one of the region's premier performance venues, The Bushnell Center for the Performing Arts, the area south of Bushnell Park is currently dominated by a series of surface parking lots. Backers of the Bushnell South redevelopment project plan to use The Bushnell as the anchor of a new arts and entertainment district for downtown Hartford. If completed as planned, Bushnell South will include approximately 1,200 residential units and ample space for restaurants, shops, bars and cultural institutions. Its price tag is estimated at \$500 million.

Plans to redevelop the area have been a topic of discussion among city leaders for well over a decade; however, the chance to acquire several key buildings has jump-started the effort. These buildings include 55 Elm at the corner of Elm and Hudson Streets, just across from Bushnell Park. It was originally built in 1926 as the headquarters of Connecticut General Life Insurance and was occupied by State of Connecticut offices until just recently. A block away are two more imposing buildings which were recently occupied by state government offices. 20 Trinity Street was built in 1905 for the Orient Insurance Company; 30 Trinity Street was built in 1917 for Phoenix Insurance.

Arrowhead Redevelopment



When Interstate-84 was built through Hartford in the early 1960s, it sealed off downtown from the city's northside neighborhoods. The area in between became a desolate urban wilderness of parking lots and pedestrian-unfriendly highway ramps. When plans to build Dunkin' Donuts Park, home of the Yard Goats, Hartford's minor league baseball team, were first proposed, supporters saw the stadium as a catalyst for reconnecting what the highway split apart. The Arrowhead Redevelopment, named after the shape of the area slated for redevelopment, which is located northwest of the stadium, is crucial to fulfilling this goal. Developers of the project hope to fill the area with a mixture of housing and retail space. A new coffeehouse opened in the area in October 2021. Appropriately, it is named *Semilla*, Spanish for seed.

North Crossing



Who wants to live across the street from a baseball stadium? Leasing agents for North Crossing will begin finding that out next Spring when the first of its 270 new apartments become available for occupancy. The new building is currently under construction at the southeast corner of

Main and Trumbull Streets; the ballpark occupies the north-east corner. In addition to the apartments, the building will also contain 11,000-square-foot of space for restaurants and shops and a 330-space parking lot. This is only Phase I of the North Crossing project, formerly known as Downtown North or "DoNo." Phase II will be built on the other side of Main Street and will be even larger, with 532 residential units and a 541-space parking lot plus more commercial space. The future of Downtown North is crucial to the development of downtown Hartford. If successful, this large influx of new residents is likely to attract new businesses – possibly even a supermarket – which will in turn attract more residents and visitors, turning downtown Hartford into the vibrant neighborhood it once was.

Park and Main



Just as North Crossing and the Arrowhead Redevelopment project promise to transform downtown's northern end, so Park & Main will form the linchpin of development to the south. The first phase of the project, a new apartment house with 39 studio, one- and two-bedroom units, was completed in July at the southwest corner of Park and Main Streets. This building also contains five street level commercial spaces, three of which have been leased. Construction is now underway across the street on Phase II at the northwest corner of Park and Main. In addition to 87 apartments, this building will include a rooftop lounge and deck and a fitness center, as well as parking. Located on two long vacant properties, Park and Main is filling a crucial gap in the Hartford development puzzle. The area is known as South Green. Now a small park, South Green extended further south in Hartford's earliest days and was used as a common pasture for livestock. It also marked the dividing point between the two roads that led to two of the four towns that then constituted Greater Hartford, Wethersfield and Farmington. Today, South Green is the gateway to Park Street, a vibrant thoroughfare that is considered the heart of Connecticut's large and growing Hispanic population. It is also a short walk from Coltsville, a National Park in the making.

There's so much more
to explore in our parks.



[RIVERFRONT.ORG/PARKS](https://riverfront.org/parks)

4
RIVERFRONT
RECAPTURE

**ARRIVE
EASIER.**



BRADLEY
INTERNATIONAL

bradleyairport.com



Parkville Market's World of Choices

Americans don't just want choices these days, we DEMAND them. Computers have put an exhausting array of choices right at our fingertips – from music to movies to TV shows. As wonderful as the internet may be, however, it's a lousy cook.

That's the main reason why the Parkville Market has become one of the region's hot spots in less than two years, even though it opened when the COVID-19 pandemic was shutting virtually everything else down. In fact, there are many towns in Connecticut that cannot offer as many different culinary choices as Parkville Market does – all under one roof.

Choose from Brazilian, Italian, Puerto Rican, Salvadorian, Tex-Mex, Vietnamese, Peruvian cuisines and more. You can also stick closer to home with American classics such as grilled cheese, barbecued baby back ribs, chicken 'n' waffles, hot fudge sundaes and that old New England favorite, clam chowder. There's even one eatery spe-

cializing in vegan dishes. The Market has three bars and weekly events with something going on every day of the week, including Irish Music Sessions on Mondays, Tuesday Trivia and comedy shows and live music on the weekends. Whether you dine in or take out, sit outside or inside, you can enjoy this amusement park for the taste buds anyway you choose.

Parkville Market is located in Hartford at 1400 Park Street, minutes from I-84, roughly half way between downtown Hartford and West Hartford Center. Once a manufacturing powerhouse, Parkville is now a diverse and vibrant neighborhood and home to some of Hartford's most innovative businesses and organizations, such as Real Art Ways, Hog River Brewing, DesignSourceCT and Hartford Flavor Company.

With 21 restaurants, three bars, seating for over 700 people and free parking for 320 vehicles, Parkville Market is well on it's way to hosting a million visitors annually.

FOOD VENDORS

Brazilian Gula Grill
Burrito Loco
Fowl Play
Frisbie's Dairy Barn
Hartford Poke Co.
J. Fry Co. Dirty Fries
J's Crab Shack
Jamaican Jerk Shack
Las Tortas MX
Meltdown on Park
Mercado 27
Mofongo
Okinawa Bobo Co.
Pho Go
Portly Pig
Que Chivo
Randy's Wooster
Street Pizza
The Butcher & The Bean
The Local
Twisted Italian Cafe
Vegan Bodega

NOW ON DISPLAY!

MUMMIES

OF THE WORLD
THE EXHIBITION



REAL MUMMIES
REAL SCIENCE
REAL PEOPLE

*Discover real mummies from
around the world, some dating
back more than 4,500 years.*

Connecticut[®]

Connecticut
Science Center



Buy tickets online at CTScienceCenter.org



(Left to right) 2021 Greater Hartford Festival of Jazz; Mariachi Mexico Antiguo plays *Our Lady of Guadalupe Procession*; Jocelyn Pleasant and the Lost Tribe at Riverfront Recapture's HartBeat Music Festival.

Embracing the Rhythms That Move Us

Live music in Greater Hartford is plentiful, diverse and of the highest quality. From the nationally known Greater Hartford Festival of Jazz in Bushnell Park to backyard salsa concerts, Hartford is a music-lovers paradise.

One of the prime reasons for this musical excellence is the internationally-known Hartt School of Music at the University of Hartford. Hartt's Jackie McLean Institute of Jazz has counted among its faculty members the late McLean himself, considered one of America's greatest alto saxophonists, as well as bassist Nat Reeves. Current teachers include Steve Davis, Rene McLean and several other standouts in the jazz world. Nationally known graduates include Jimmy Green, Dezron Douglas, Sarah Hanahan and many others.

The proliferation of top musicians produced by Hartt has given Greater Hartford a jazz music scene as good as almost anywhere in the country. The Greater Hartford Festival of Jazz draws thousands to Hartford every summer. Hartford Public Library's Baby Grand Jazz series keeps the music flowing in the winter. Monday Night Jazz in downtown Hartford's Bushnell Park is the longest continually-running jazz concert series in the nation.

Jazz is a large part of Greater Hartford's musical mosaic, but there's so much more. Fans of Bach, Beethoven and Bartok flock to hear the Hartford Symphony Orchestra play the classics at The Bushnell Center for the Performing Arts.

Nationally known country, rock and rap artists regularly play large-scale venues such as the XL Center, Infinity Music Hall and the Xfinity Theater. Most of the region's cultural institutions also host concerts on a regular basis, including the Wadsworth Atheneum and Real Art Ways, as do its many churches. Blues lovers find a home at the Black-Eyed & Blues Festival every summer and Riverfront Recapture's HartBeat Music Festival provides something for just about everyone.

Greater Hartford's diversity is also a key element in its music scene. Strolling musicians play "Parrandas" during the holidays, a cherished Puerto Rican tradition. Steel drum bands make the very air seem to shimmer at the West Indian Parade. Celtic music rings out from traditional "seisiúns" held at local bars and clubs. Faculty from the Mariachi Academy of New England add a lively touch to Mexican holidays and events. "Diverse" is the only way one can describe "Hartford's Hot Several," an eclectic and offbeat group of musicians whose members include Hartford City Council Member Josh Michtom and Connecticut Public Radio host Chion Wolf. Equally popular are the youngsters from Hartford Proud Drum, Dance & Drill Team, whose energy could light up an entire city!

Details on many of the region's major musical venues can be found in our Hartford Attractions, starting on page 31. For the latest on upcoming performances, check Hartford.com.

BOND

BALL ROOM



With stunning panoramic views of Hartford's City skyline that surround you and 5,000 square feet of event space, the Bond Ballroom has your special day covered. At The Bond Ballroom guests will enjoy award winning hospitality, with views that will amaze them as they dance on our 20' by 40' dance floor, one of the largest in Connecticut. The Bond Ballroom is able to accommodate up to 350 guests, customizing stunning solutions for your event.

338 Asylum Street
Penthouse Floor
Hartford, CT
860-519-5572
bondballroom.com

Trinity College

HARTFORD CONNECTICUT

COME VISIT US IN THE HEART OF HARTFORD.

LOCATED ON 100 ACRES, TRINITY COLLEGE HAS A QUINTESSENTIAL NEW ENGLAND CAMPUS IN A DYNAMIC, DIVERSE CITY. COME JOIN US AT SOME OF OUR COMMUNITY DESTINATIONS.

AUSTIN ARTS CENTER

Audiences from campus and the Hartford community are invited to enjoy music, fine art, and stage performances presented by students, faculty, and visiting artists.

CINESTUDIO

Modeled after the classic movie palaces of the 1930s, the not-for-profit independent film theater is open to the public and offers daily showings of classics and newer releases, in addition to hosting film festivals.

TRINFO.CAFÉ (1300 BROAD STREET)

Serving the neighborhoods surrounding the college for 20 years, Trinfo.Café provides computer literacy training for adults and youth, media literacy for teens, and an open computing center for city residents, in addition to hosting classes and special programs.



300 Summit Street, Hartford, CT www.trincoll.edu



Winterfest

Bushnell Park, Downtown Hartford
November 26 – January 9

Winterfest Hartford brings free, family-friendly winter activities to thousands of families in Hartford and beyond. The Bushnell Park ice rink will be open for free skating daily November 26 to January 9 from 11 a.m. to 8 p.m., except for Christmas Eve, Christmas and New Year's Day, when it will be open noon to 4 p.m.; and New Year's Eve, when it will have extended hours. Free learn-to-skate classes are offered on Saturdays in December from 10 a.m. – 11 a.m. In addition, the Bushnell Park Carousel will be open and offering rides for \$2. For more information on Winterfest Hartford and an up-to-date schedule of events, visit winterfesthartford.com. For Carousel hours of operation, see Bushnellpark.org. To donate, go online at www.winterfesthartford.com.

Winterfair: Hartford's New Holiday Market

Various Sites
Through December 31

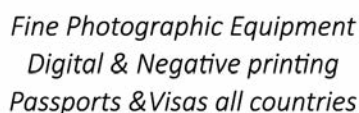
New to Hartford this year is Winterfair, a family-friendly market that will run through New Year's Eve. Winterfair will be

held on 23 select days and includes over 100 local makers, creatives and crafters selling a wide variety of gifts, foods and other items so that holiday shoppers can "go small and go local." Go to www.winterfairhartford.com for a complete schedule and list of vendors.

It's A Wonderful Life: A Live Radio Play

Hartford Stage
50 Church Street, Downtown Hartford
Through December 26, 2021

It's a wonderful time to be back at Hartford Stage! Watch as an ensemble brings dozens of characters to the stage alongside a live sound effects "foley" artist in the style of a 1940s radio show, broadcast straight from our theatre. This festive American holiday classic tells the story of the idealistic George Bailey in conflict with the Scrooge-like Mr. Potter, and of the greater community coming together to show George how much his life truly matters on a fateful Christmas Eve. Adapted by Joe Landry, *It's a Wonderful Life* is based on the story, *The Greatest Gift* by Philip Van Doren Stern from the screenplay by Frances Goodrich, Albert Hackett, Frank Capra, and Jo Swerling. For tickets, show times and more information, go to HartfordStage.org.



75Asylum Street, Hartford



OPEN
Wednesday – Saturday
6:00 PM - Close

FREE PARKING!



J XL Center
S Hilton Hotel

R 179 Allyn

Q Union Station (RR)
(connections to 30-BDL)

- L** Bushnell Park
- N** Soldiers & Sailors Arch
- O** State Capitol

- I Goodwin Hotel
- J XL Center
(connections to CTfastrak)
- K Theater Works

L Bushnell Park
M Bushnell Park
Carousel

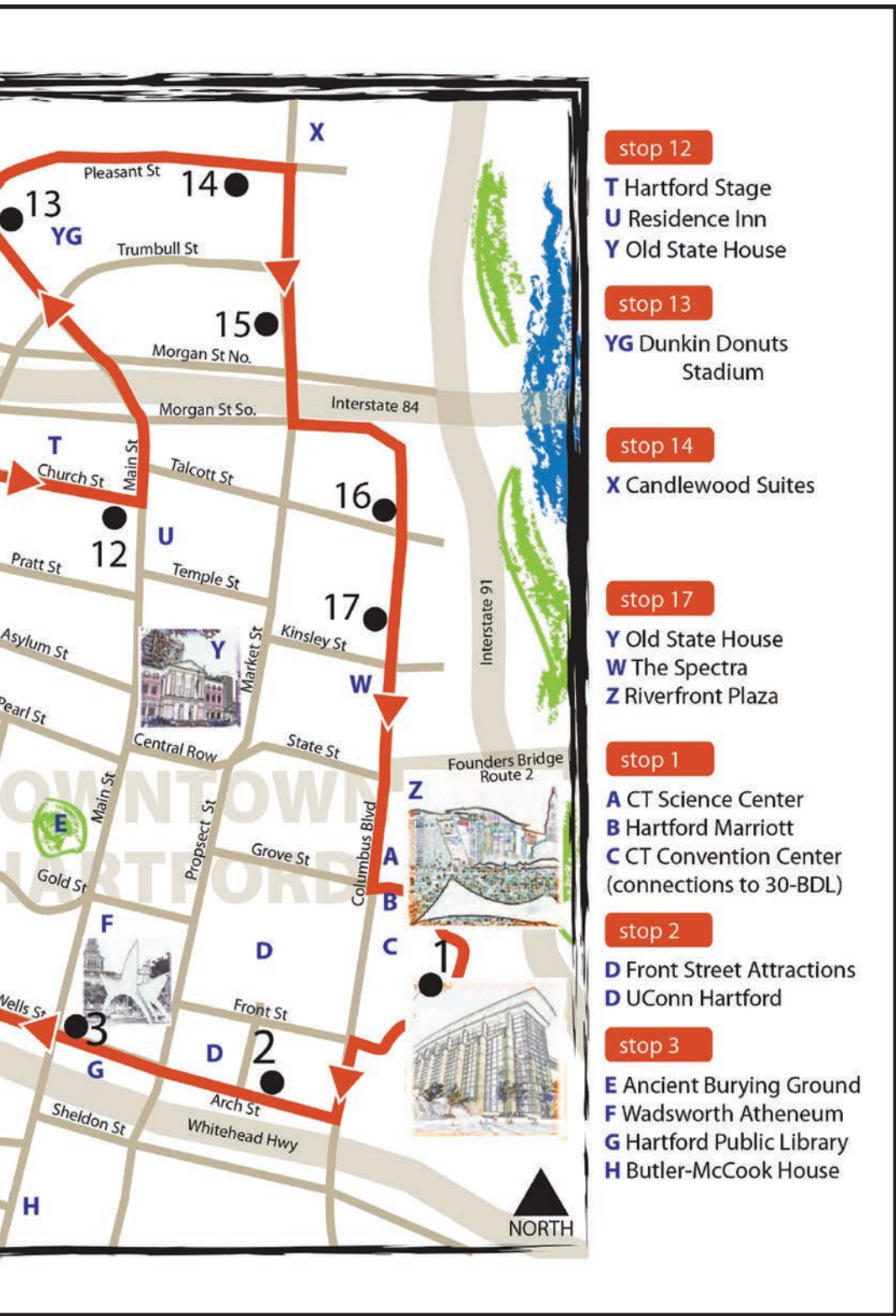
**See hartford.com
for restaurants, bars,
attractions**



Free downtown shuttle
departs CT Convention
Center every 15 minutes
Monday through Friday from
7:00am to 7:00pm.

Extended hours during special large events—
check www.cttransit.com for details.

Harvey & Lewis
OPTICIANS



stop 12

- T** Hartford Stage
- U** Residence Inn
- Y** Old State House

stop 13

- YG** Dunkin Donuts Stadium

stop 14

- X** Candlewood Suites

stop 17

- Y** Old State House
- W** The Spectra
- Z** Riverfront Plaza

stop 1

- A** CT Science Center
- B** Hartford Marriott
- C** CT Convention Center (connections to 30-BDL)

stop 2

- D** Front Street Attractions
- D** UConn Hartford

stop 3

- E** Ancient Burying Ground
- F** Wadsworth Atheneum
- G** Hartford Public Library
- H** Butler-McCook House

45 Asylum Street • Downtown Hartford • 860-522-2020
 Bristol • Canton • Enfield • Farmington • Glastonbury
 Hartford Hospital • Kensington • West Hartford
 Website: harveyandlewis.com

Celebrating Hartford's Neighborhoods!



Hammond Realty



Leslie Hammond
 Realtor®, Broker, ABR,
 Ecobroker, NAR Green
leslie@lesliehammondrealty.com
www.LeslieHammondRealty.com
 682 Prospect Avenue
 Hartford, CT 06105
 860-205-4552



ALL ARE WELCOME!



**Sunday
Worship,
10:30am**

Corner of
Main & Gold
Streets,
Hartford

Free parking! Details at:
centerchurchhartford.org



**GOODWIN
COLLEGE**
 Empowering
hard-working
students to
become
sought-after
employees.

www.goodwin.edu/learnmore

**DEPEND ON
TempsNow!**
 QUALITY TEMPORARY WORKERS
860-525-1109



316 Farmington Ave., Hartford, CT
www.staffingct.com

Care For Your Whole Family.

- Medical care
- Pediatrics
- Women's health care
- Behavioral health
- Dental care
- Addiction treatment
- Pain management
- And more!



43 Woodland Street, Hartford

860.793.3500

Services available in English and Spanish.

Monday–Friday: 8:00 AM–6:00 PM

Saturday: 9 AM–1 PM

WheelerHealth.org



Wheeler

Family Health
& Wellness Center

DECEMBER 2–23

Christmas on the Rocks

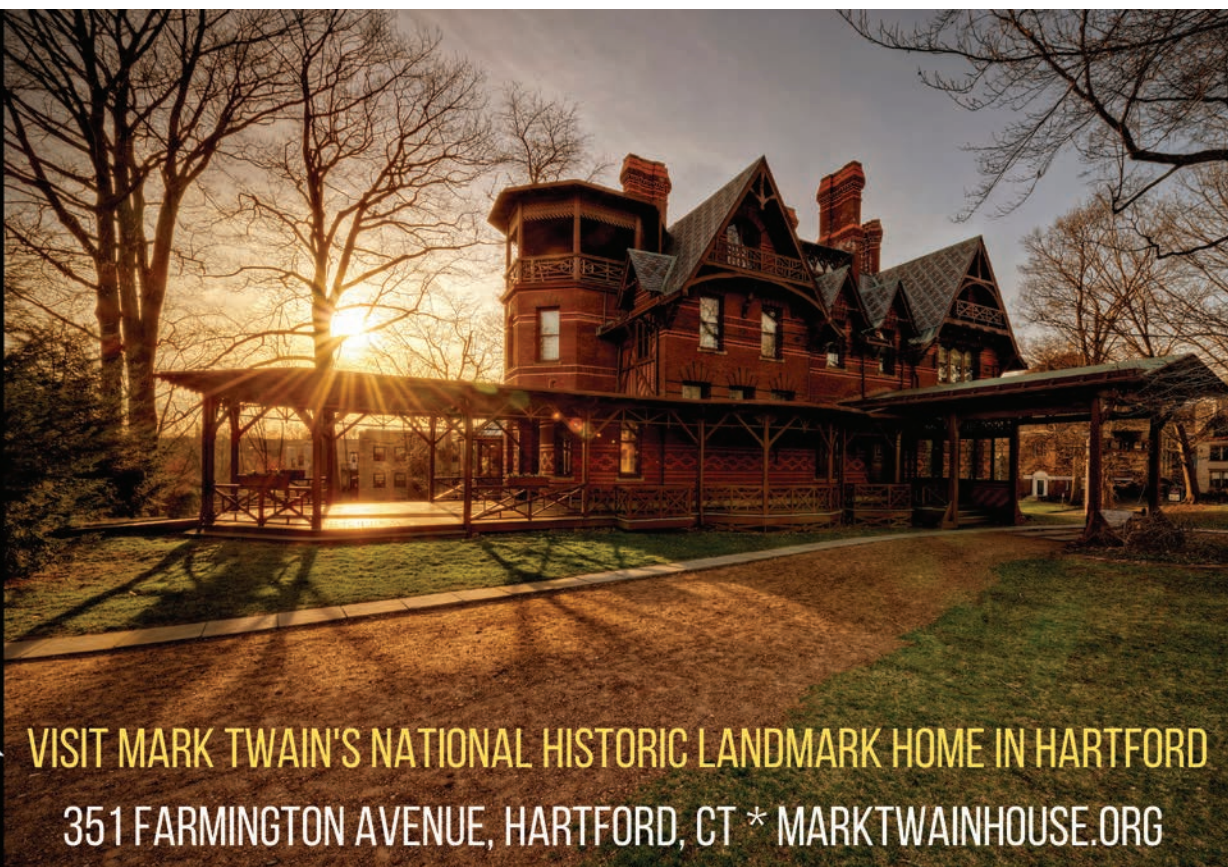


AN OFFBEAT COLLECTION OF
TWISTED HOLIDAY TALES

THEATER
WORKS
HARTFORD

twhartford.org

Mark Twain the House & Museum



VISIT MARK TWAIN'S NATIONAL HISTORIC LANDMARK HOME IN HARTFORD

351 FARMINGTON AVENUE, HARTFORD, CT * MARKTWAINHOUSE.ORG



Greater Hartford Breweries & Distilleries



BREWERIES

- 1 **Phantom Brewing:** 290 Murphy Rd., Hartford, 860-247-2969
- 2 **Thomas Hooker:** 16 Tobey Rd., Bloomfield and 140 Huyshope Ave., Hartford, 860-242-3111 or 860-461-0945
- 3 **City Steam:** 942 Main St., Hartford, 860-525-1600
- 4 **Hog River Brewery:** 1429 Park St., Hartford, 860-206-2119
- 5 **New Park Brewery:** 485 New Park Ave., West Hartford, 860-232-2033
- 6 **WeHa Brewing & Roasting Company:** 141 Shield St, West Hartford, 578-8934
- 7 **Back East Brewing Company:** 1296 Blue Hills Ave, Bloomfield, 860-242-1793
- 8 **Paddle Creek Beer Company:** 1277-1287 Main St., East Hartford, (860) 289-2337
- 9 **East Hartford Brewing Group:** 776 Tolland St, East Hartford, 860-469-6135

DISTILLERIES

- 10 **Hartford Flavor:** 30 Arbor St., Hartford, 860-338-1642
- 11 **Waypoint Spirits:** 410 Woodland Ave, Bloomfield, 860-858-1446
- 12 **Central CT Distillers:** 239 Burnham St, East Hartford, 860-906-4894

Sales &
Service

Open Mon. - Fri.
8:00 am - 5:30 pm



EUROPEAN MOTORS

247 Park Road • West Hartford, CT • (860) 232-4119 • www.europeanmotorswh.net/



MDC

*Protection at
the Source...*

...Quality at the Tap

The MDC provides safe,
pure drinking water and
environmentally protective
wastewater collection services
to our customers in the Greater
Hartford Region.

FOLLOW THE MDC     WWW.THEMDC.ORG



Hartford is the capital of Connecticut and is often called "The Insurance Capital of the World," since it is home to many major insurance corporations, such as Aetna, Travelers, and The Hartford Insurance group. Although its population has decreased since reaching a peak of approximately 164,000 in the early 1960s, Hartford remains the region's largest city and its cultural and employment center.

Hartford was founded in 1636 by Reverend Thomas Hooker, whose sermon on liberty became the basis for Connecticut's Fundamental Orders, adopted in 1639 and considered by some to be the first written Constitution in the Western tradition. For its first 200 years, Hartford was a relatively minor river port and trading center. That all began to change when Samuel Colt decided to build a factory in his hometown to manufacture his increasingly popular Colt revolver. The Colt Armory was soon the largest privately-owned factory in the world and its distinctive blue-onion dome topped by a golden statue of a colt remains one of Hartford's most distinctive landmarks. The Colt factory attracted some of the most talented inventors of America's Industrial Revolution and Hartford was, for a time, the country's "Silicon Valley." It became an industrial powerhouse and continued to be so until after World War

II. The city's factories attracted waves of immigrants from countries around the globe, each of which has left its mark on the city.



Corning Fountain and the Connecticut State Capitol, downtown Hartford

Nineteenth-century Hartford was also one of the most forward-thinking cities in America in terms of culture. The Wadsworth Atheneum is the country's oldest public art museum; Bushnell Park is the country's first publicly-funded park; the American School for the Deaf (now located in West Hartford) was the country's first school specifically designed for the hearing impaired; and the Bulkeley Bridge is one of the world's

largest stone arch bridges. The city's prominence as a publishing center attracted Mark Twain, who moved in next door to Hartford native Harriet Beecher Stowe, author of *Uncle Tom's Cabin*. Both homes have been restored and are among the city's most prominent attractions. Just down the street from the Stowe House lived a little tomboy who would go on to become one of the greatest actresses Hollywood has ever produced, Katherine Hepburn, who is buried in Cedar Hill Cemetery, another of Hartford's magnificent attractions. Today, Hartford is a richly diverse urban center.

The city's many festivals and events reflect its population composed of African-Americans, Puerto Ricans, Jamaicans, Brazilians, Italians, Bosnians, Peruvians, Indians, Guyanese, Mexicans, Burmese, Albanians, Chinese, Somalians, Polish and many other nationalities and ethnicities.

Settled in 1635; incorporated 1784. Town and city consolidated, Apr., 1896. Total area: 18.0 sq. miles. Population: est., 124,744. Post offices: Hartford, Main Office, 141 Weston St.; Station A, 510 Park St.; Central, 80 State St.; Barry Square, 641 Maple Ave.; Blue Hills, 433 Woodland St.; Unity Plaza, 271 Barbour St. City Hall 550 Main St., 06103-2992; Tel., (860) 757-9751; FAX, (860) 722-8041. Website: www.hartford.gov.

Build Your Career. Ditch the Commute.



Get an Inside Track to a Career at Hartford Hospital, CT Children's, or Trinity College

SINA's WALK TO WORK PROGRAM

helps South Central Hartford residents launch their careers at Hartford Hospital, Connecticut Children's or Trinity College by connecting neighborhood residents to available, entry-level jobs.

Working at these major employers offers residents the chance for a career and not just a job, the convenience of working close to home, and an opportunity to serve their own community.

What WALK TO WORK CLIENTS Say About The Program

"I had applied for dozens of positions at Hartford Hospital without ever hearing back. The program was 100% a huge help in getting my foot in the door there."

"If they didn't help me with all those interview question answers, I probably wouldn't have gotten the job."

"Elsa pressed me to really decide what I wanted to do and focus on one thing. She is a true career navigator."

OF CLIENTS WHO GOT A JOB THROUGH THE PROGRAM...



like their job
feel they have improved their quality of life
say they will have career advancement opportunities

What EMPLOYER PARTNER HIRING MANAGERS Say About The Program

"It is so important to be able to offer jobs to people who live in the neighborhood because they have a stronger sense of community."

I'm a strong believer in giving people an opportunity - education is one part of the picture, but it is all about work ethic."

"Hiring Walk to Work candidates allows us to become more of a diverse organization. Many are bilingual, which is an asset to our team."

Meet **ELSA HUERTAS** | Walk to Work Career Navigator



Elsa is a bilingual, experienced HR professional with deep roots in our community. A hospital hiring manager says, "Elsa is passionate about what she does and genuinely cares about her clients. We both want to give people an opportunity to succeed in a career and not just a job."

Elsa offers resume assistance, career coaching, customized interview support, and direct connections to hiring managers at the three employer partners.

87%

Clients rating Elsa's services as good or excellent

You must live in zip code 06106 or 06114 to be eligible for Walk to Work services.
For more information, contact Elsa Huertas at (860) 493-1618 or ehuelas@sinainc.org

THE CARE YOU DESERVE with our NEW PROVIDER!

Now introducing
Dr. Christian Grant-Brockenberry.

"I love Contemporary General Dentistry. The staff is so friendly and professional. The office has all the latest technology/equipment and the expertise to help me maintain a beautiful smile. Thank you, Dr. Wilson and your amazing staff."

★★★★★ —Aldith F.



FREE
ELECTRIC TOOTHBRUSH
WITH EXAM, X-RAYS,
& CLEANING
EXP. 12/30/21

\$500 OFF
INVISALIGN®
EXP. 12/30/21

FREE
CONSULTATION
EXP. 12/30/21

A Gorgeous Smile IS JUST AN APPOINTMENT AWAY!

Whatever your dental needs are, our team is here to put your health and comfort first. Get a beautiful smile to last a lifetime!

- General & Cosmetic Dentistry, Implants, Emergencies
- State of the Art Treatment & Technology
- Pristine & Relaxing Office
- Most Insurance Plans Accepted
- Convenient Location & Easy Parking
- Advanced sterilization & air purification

VISIT OUR TWO CONVENIENT LOCATIONS!



Contemporary
General
Dentistry, LLC

836 Farmington Ave., Ste. 131
West Hartford, CT
860-590-9009
www.bryanwilsondds.com



Smile Studio
DENTISTRY

1 Gold Street, Ste. Q
Hartford, CT
860-200-3936
www.thesmilestudiodentistry.com



hartfordparking.com
11 Asylum Street
Hartford, CT 06103
(860) 757-0720

2 WAYS TO PAY



By coin or credit card at
on-street parking kiosks



Use the woonerf app
on your mobile device.



MAT Garage
20 Church Street, Hartford

Chapel Street Lot
Perfect for over-sized vehicles
58 Chapel Street, Hartford

Hartford Public Library
500 Main Street, Hartford

On-street Parking News

FREE PARKING* after 6 pm,
Monday - Friday and all day
Saturday & Sunday

FREE PARKING* all day on the
following holidays: New Year's Day,
Memorial Day, 4th of July, Labor Day,
Thanksgiving & Christmas

NEW 10 HOUR PARKING ZONES:
Ashley Street, Essex Street, Hoadley Place,
Sheldon Street, Clinton Street, Elm Street,
Foot Guards Place

NEW 4 HOUR PARKING ZONE:
Washington Street near Hartford Hospital
(Park Street to Retreat Avenue)

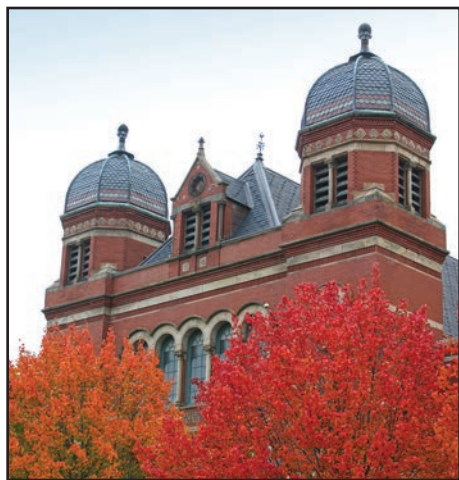
* Unless noted otherwise

Hartford Attractions

See www.Hartford.com for listings of entertainment, restaurants & nightlife

Cultural Centers

ARTISTS COLLECTIVE: Cultural arts center emphasizing arts and culture of the African Diaspora. Founded by saxophonist Jackie McLean and his wife, Dollie. Year-round professional training and performances in dance, music, drama, visual arts and martial arts. 1200 Albany Avenue, 860-527-3205, www.artistscollective.org



CHARTER OAK CULTURAL CENTER: Multicultural arts center devoted to exploring world cultures through visual and performing arts. Housed in the state's first synagogue building, built in 1876. 21 Charter Oak Ave., 860-310-2580, www.charteroakcenter.org

HARTFORD PUBLIC LIBRARY: Award-winning library system is the place to go for arts, culture, musical performances, history, multi-media resources and lots of books, as well as free internet access, classes and much more. Includes Central Library plus seven neighborhood libraries. 500 Main St., 860-695-6300, www.hplct.org

Cultural Organizations

HARTFORD SYMPHONY ORCHESTRA: Connecticut's premier musical organization presents 100+ concerts annually

including Masterworks series, POPS!, Sunday Serenades, Jazz and Strings, and the Talcott Mountain Music Festival. 860-244-2999, www.hartfordsymphony.org

HARTFORD ATHLETIC: Hartford's new professional soccer team. Home games at Dillon Stadium. 250 Huyshope Ave., (860) 298-9233, hartfordathletic.com

HARTFORD YARD GOATS: New AA baseball affiliate of the Colorado Rockies (former New Britain Rock Cats). Award-winning stadium hosts many special events. Dunkin' Donuts Park, 1214 Main St., 860-246-GOAT, www.yardgoatsbaseball.com



RIVERFRONT RECAPTURE: Operates four riverside parks in Hartford and East Hartford (Mortensen Riverfront Plaza, Riverside Park, Charter Oak Landing and Great River Park) as well as connecting paths and walkways. Also hosts numerous festivals, events, exercise classes, rowing classes and other programs. Office: 50 Columbus Blvd 1st floor, 860-713-3131, riverfront.org

Galleries & Museums

100 PEARL STREET GALLERY: Managed by the Greater Hartford Arts Council, this gallery showcases contemporary art exhibits. 100 Pearl Street, Hartford, 860-525-8629, letsgoarts.org/gallery

THE AMISTAD CENTER FOR ART AND CULTURE at the Wadsworth Atheneum Museum of Art: 7,000 objects including paintings, sculpture, historical documents, photos, memorabilia and rare books that document the African American experience. Open Wed.-Sun. 600 Main St., 860-838-4133 or www.amistadcenter.org/

AUSTIN ARTS CENTER: Trinity College's venue for performing and visual arts presents over 40 public events annually. Many are free and feature guest artists as well as Trinity faculty and students. 300 Summit St., 860-297-2199, www.AustinArts.org

CONNECTICUT HISTORICAL SOCIETY: A museum, library, research and education center focused on Connecticut's history. Tue.-Fri. 12pm-5pm, Sat. 9am-5pm. 1 Elizabeth St., 860-236-5621, www.chs.org

CONNECTICUT STATE LIBRARY & MUSEUM: Principal library for State government. State Archives. Connecticut history and genealogy. Federal/State document depository. State's largest collection of Connecticut newspapers. 231 Capitol Ave., 860-757-6500, www.cslib.org

CONNECTICUT SCIENCE CENTER: Located in an architectural gem overlooking the Connecticut River, the Center features over 165 hands-on activities and exhibits, a state-of-the-art 3D digital theater, plus daily pro-

Continued on page 33

HARTFORD CATHEDRAL OF SAINT JOSEPH



Pastor

*MOST REVEREND LEONARD P. BLAIR
ARCHBISHOP OF HARTFORD*

Rector

VERY REVEREND DANIEL J. MCLEAREN

CONTACT US

Parish Office

140 FARMINGTON AVENUE
HARTFORD, CT 06105
MONDAY-FRIDAY; 9-4 PM
(860) 249-8431
HARTFORDCATHEDRAL.ORG

Mass Schedule

SATURDAY VIGIL: 4:00 PM
SUNDAY: 8:30 AM; 11:00 AM
DAILY MASS: MONDAY-FRIDAY
7:30 AM, 12:10 PM, SAT. 9:00 AM

Devotions

SATURDAY: 9:30-10:30 AM
HOLY HOUR:
1ST SATURDAY EACH MONTH

Sacrament of Reconciliation

SATURDAY: 3:00 PM

Open for Daily Prayer

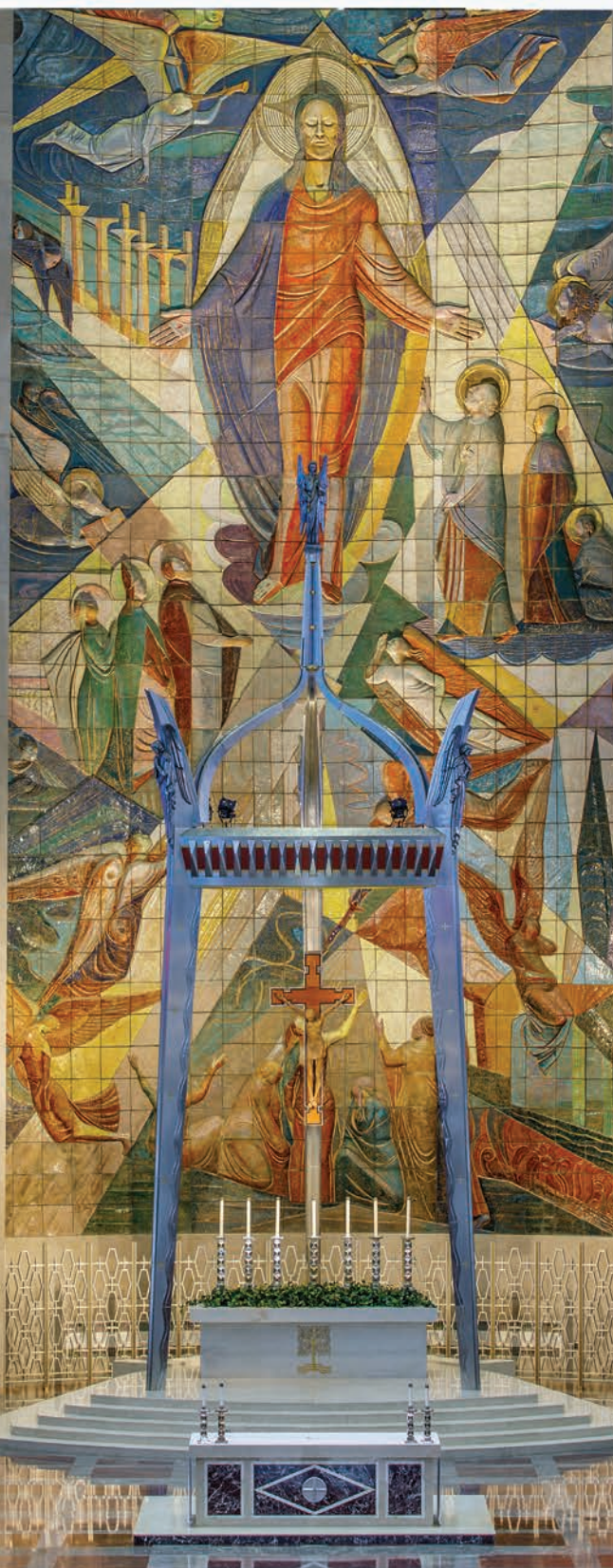
Weekdays: 6:30 AM to 3:30 PM
Weekends: 7:00 AM to 6:00 PM

Cathedral Tours

Free Guided Tours offered the last Sunday of each month after the 11:00 AM Mass Please call the parish office to arrange large group tours. Sponsored by the Knights of Columbus.

Livestream

Watch the Sunday Mass Live - Saturday at the 4:00 PM Vigil on the Cathedral website:
HARTFORDCATHEDRAL.ORG/LIVESTREAM
FACEBOOK | YOUTUBE



Hartford Attractions (continued from pg. 31)

See www.Hartford.com for listings of entertainment, restaurants & nightlife

grams and events. 250 Columbus Boulevard, Hartford, 860-724-3623, ctsciencecenter.org

GALLERY AT CONSTITUTION PLAZA:

Changing exhibitions promoting cultural enrichment and visual understanding of art, film and historic preservation in Connecticut. Free. One Constitution Plaza, 2nd flr., 860-256-2800, www.ctvis-it.com/museums-and-galleries

GALLERY OF AMERICAN ART:

At TheaterWorks/City Arts on Pearl. Free. Open Mon.-Fri. 9am-3pm, and 90-minutes before curtain at TheaterWorks. 233 Pearl St., 860-527-7838, www.theaterworkshartford.org

REAL ART WAYS: The home of cutting-edge art in Connecticut has become a lot more. Its theater shows an exciting range of independent films and its parties are legendary. Stop by Creative Cocktail Hour on the third Thursday of every month – the hottest gathering in town. 56 Arbor Street, Hartford, 860-232-1006, www.realartways

PROMENADE GALLERY in The Bushnell Center for the Performing Arts:

166 Capitol Ave., 860-987-6000, www.bushnell.org

WADSWORTH ATHENEUM: Founded in 1842, the Wadsworth is the oldest public art museum in the country. Among the 50,000 items in its collections are some of the finest paintings from the Hudson River School of landscape paintings, the Wallace Nutting collection of American colonial furniture and decorative arts; and the Samuel Colt firearms collection. 600 Main Street, Hartford, 860-278-2670, thewadsworth.org

Historic & Cultural Sites

ANCIENT BURYING GROUND: Hartford's oldest historic site, final resting place of

many founders of the city. Gravestone art and history from mid-1600s to early 1800s. Mon.-Sat. weather permitting. Gold St. & Main St., 860-296-6128, www.theancientburyingground.org



BUSHNELL PARK CAROUSEL: Antique 102-year-old wooden Stein & Goldstein carousel, open year-round in new enclosed pavilion. Rentals available. 1 Jewell St. at the Memorial Arch, 860-585-5411; www.thecarouselmuseum.org

BUTLER-MCCOOK HOUSE & GARDEN AND AMOS BULL HOUSE: 1782 home chronicles Hartford's transformation to a modern city. Open May through December. Group tours available. 396 Main St., 860-522-1806, www.ctlandmarks.org

CALDER'S STEGOSAURUS: Alexander Calder's massive, yet whimsical, steel sculpture towers above Burr Mall, a small park located between the Wadsworth Atheneum and Hartford City Hall.

CEDAR HILL CEMETERY: Encompassing 270-acres, Cedar Hill welcomes visitors to experience its art, culture, history and nature's beauty. Self-guided tour materials. 453 Fairfield Ave., 860-956-3311, www.cedarhillfoundation.org

CENTER CHURCH: Hartford's founding

institution. View Tiffany stained-glass windows and learn about Hartford's history. Call for hours or to schedule a visit. Corner of Gold & Main Streets, 860-249-5631, www.centerchurchhartford.org

CONNECTICUT STATE CAPITOL: Gold-domed, High Victorian Gothic building completed in 1878. State executive offices and legislative chambers, historic displays. Free tours Mon. thru Fri. start in adjacent Legislative Office Building (300 Capitol Ave.). Closed weekends, state & federal holidays. Group reservations necessary. 210 Capitol Ave., 860-240-0222, www.cga.ct.gov/capitol tours

CONNECTICUT STATE VETERANS

MEMORIAL: State's new memorial honors all Connecticut veterans, past, present and future. Outdoors, year-round, free. 360 Broad St. in Minuteman Park, 860-616-3603, www.cthonorsvets.org



CONNECTICUT'S OLD STATE HOUSE:

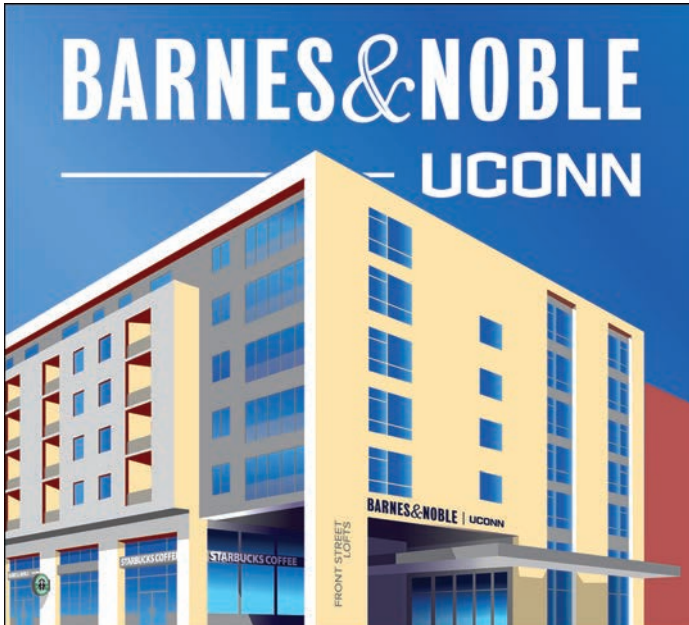
Interactive exhibit, Curiosity Museum, restored historic chambers, guided and self-guided tours and family fun! Hours/admission on website. Gift shop of Connecticut items. 800 Main St., 860-522-6766, www.ctoldstatehouse.org

HARRIET BEECHER STOWE CENTER:

A 21st-century museum, the Center uses the author's story to inspire social justice and positive change. Stowe

Continued on page 35

BARNES & NOBLE — UCONN



HARTFORD'S ONLY FULL-SERVICE BOOKSTORE

30% Off Bestsellers
Children's & Young Adult Sections
Libros en Español
Local & National Author Events
Kid's Story Hours & Events
Starbucks® Café

OPEN TO THE PUBLIC
VISIT US BEHIND CITY HALL
AT 18 FRONT SREET, HARTFORD
 For more info, call (860) 263-2260
 and follow us on Facebook
 @UConnGreater Hartford

ENJOY STYLE AND LUXURY IN DOWNTOWN HARTFORD



Located in the Front Street District, the Marriott Hartford Downtown overlooks the Connecticut River and is interconnected with the Connecticut Convention Center. Local Hartford attractions within walking distance include Infinity Hall, Spotlight Theater, Wadsworth Atheneum, The Bushnell, Old State House, State Capitol Building, and the adjacent Connecticut Science Center.


 Marriott Hartford Downtown
 200 Columbus Boulevard
 Hartford, CT 06103
 (860) 249.8000 · hartfordmarriott.com






THE PACK IS BACK

DON'T MISS OUT ON ALL OF THE EXCITEMENT AS THE HARTFORD WOLF PACK RETURN TO XL CENTER FOR THEIR 25TH SEASON!

To view our **PROMOTIONAL SCHEDULE**, scan here



#ThePackisBack

To purchase **SINGLE GAME TICKETS**, scan here



hartfordwolfpack.com



860-722-9425

Hartford Attractions (continued from pg. 33)

See www.Hartford.com for listings of entertainment, restaurants & nightlife

wrote the best-selling anti-slavery novel *Uncle Tom's Cabin*. Stowe House tours, plus discounted tours with Mark Twain House & Museum. 77 Forest St., 860-522-9258 ext.317, www.harrietbeecher-stowe.org

ISHAM-TERRY HOUSE: Built in 1854, example of the Italianate style popular before the Civil War. Remodeled in 1880's, gas lighting fixtures, stained glass windows, painted walls/ceilings in many design styles. By appt. only. 211 High St., 860-247-8996, ext. 11, www.ctlandmarks.org



KENEY CLOCK TOWER: A landmark for those entering Hartford's downtown area from the north. Built in 1898 by Henry Keney in memory of his mother at the site of the family homestead and business. Main & Ely Streets, 860-722-6505

MARK TWAIN HOUSE & MUSEUM: Victorian mansion where author lived from 1874 to 1891 when he created the famous characters Tom Sawyer and Huckleberry Finn. Museum Center features galleries, store and café. Year-round. 351 Farmington Ave., 860-247-0998, www.marktwainhouse.org



SOLDIERS & SAILORS MEMORIAL ARCH: 116-ft.-tall brownstone memorial designed by architect George Keller. Erected in 1886, dedicated to 4,000 Hartford citizens who served in the Civil War. Free tours Thursdays, May-Oct. from 12pm-1:30pm. Bushnell Park, 860-232-6710, www.bushnellpark.org

Movie Theaters

AMC CLASSIC: Bloomfield, 863 Park Avenue, 860-286-7900, www.amctheatres.com

APPLE CINEMAS HARTFORD XTREME: 330 New Park Avenue, Hartford, 860-236-6677, www.applecinemas.com/movies

APPLE CINEMAS LUXURY DINE-IN: 39 Front Street, Hartford, 959-255-9300, www.applecinemas.com/movies

CINESTUDIO: 200 Summit Street, Trinity College, Hartford, 860-297-2544, www.cinestudio.org

REAL ART WAYS THEATER: 56 Arbor Street, Hartford, 860-232-1006, www.realartways

WADSWORTH ATHENEUM AETNA THEATER: 600 Main Street, Hartford, 860-278-2670, thewadsworth.org

Performance Venues

THE BUSHNELL: Many of the world's greatest performers have trod across The Bushnell's stage, from Arturo Toscanini to Judy Garland. It is home to the Hartford Symphony Orchestra and other arts organizations and hosts a wide variety of shows virtually every week, some right off Broadway. The entertainment complex includes the original Mortensen Hall and the recently constructed Belding Theater, as well as space for meetings, weddings and other events. 166 Capitol Ave., Hartford, 860.987.5900, bushnell.org.

CAROL AUTORINO CENTER FOR THE ARTS: Located on the campus of the University of Saint Joseph in West Hartford, the Center presents an eclectic line-up of plays, concerts and other events. 1678 Asylum Avenue, West Hartford, 860-232-4571, usj.edu/arts

INFINITY HALL : This acoustically pristine, 500-seat theater is modeled on its legendary parent theater located in Norfolk, Connecticut. It hosts approximately 250 music and comedy shows annually by the likes of Al DiMeola, the Gin Blossoms and Howard Jones. 32 Front Street, Hartford, 1-866-666-6306, www.infinityhall.com/Events/

LINCOLN THEATER: Located on the University of Hartford campus, this theater seats 716 people. The Lincoln makes full use of the university's talented students and faculty from the world-famous Hartt School of Music. 200 Bloomfield Avenue, West Hartford, 860.768.4100 hartford.edu/hartt

WEBSTER UNDERGROUND: "Hartford's

Continued on page 37

Celebrity Shuttle

Transport with Homecare

Convenient 24/7 Shuttle Service

Homecare

Sunday homecare and shuttle - We can accompany you and shuttle you to church!

Senior Transportation to Pharmacy & Errands

Pet Transportation & Homecare

Companion and Home Making,
\$16.50 - \$18.50 per hour

PCA/HHA/CNA/24-Hour Live-in Service,
\$18 per hour, live-in \$180-\$220 per day

Grocer Pick-up • Private Wheelchair

Restaurant Deliveries • Curbside Pick-up

Download
our App
on Android
and iOS



877-550-2353

203-440-9744

www.celebrityshuttle.com

HCA.0001670



FREE CONSULTATIONS – RELIABLE & AFFORDABLE

TANGIERS
International
WWW.TANGIERSMARKET.COM Since 1995

SPECIALTY FOODS FOR ALL PEOPLE

Falafel, Gyros, Kebabs, Hummus, Tabouli, Baba Ghanoush, Baklava and much more. Extensive array of International Foods from the Middle East & Mediterranean.

Fruits, Vegetables, Nuts, Olives, Oils, Spices, Beans, Cheeses.

550 Farmington Avenue | Hartford | 860-233-8168

CENTRAL BAPTIST CHURCH

457 Main St. • Hartford, CT 06103 • Phone (860) 522-9275

Come celebrate with us during ADVENT



December 4th at 2:00 pm: In partnership with Grace Academy, Opera Hartford presents *Amahl and the Night Visitors*

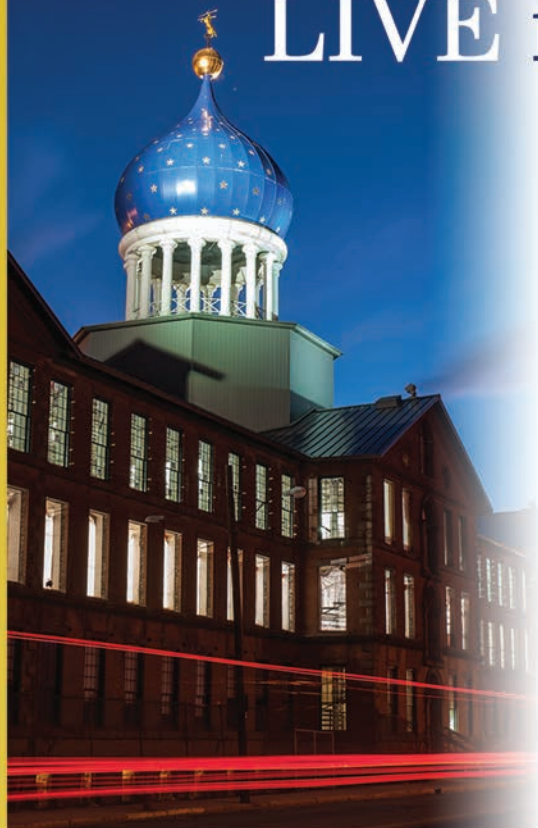
December 19th at 9:30 am: A Service of Lessons & Carols

Karen and Vietnamese language services every Sunday at 11:30 a.m.

A Welcoming Congregation for All People!

The Rev. John F. Endler, Senior Minister

LIVE in a Hartford Icon!



Hartford's finest loft-style apartments are located in the city's most famous building.

- Loft Style Studio, 1 & 2 Bedroom Apartments
- Open Style Kitchens with Breakfast Bar
- Stainless Steel Appliances
- Over-Range Microwave
- Dishwasher & Garbage Disposal
- Granite Countertops in Most Units
- Washer/Dryer in Most Units
- Custom Hardwood Flooring
- High Ceilings
- Over-sized Windows with Custom Window Treatments
- Incredible Views
- Central Heat, Central Air and Ceiling Fans
- Laundry Facilities
- Water, Sewer and Trash Removal Included

QUALITY COMMERCIAL SPACE ALSO AVAILABLE.



For apartment and commercial space inquiries, contact: Clarissa Heredia
140 Huyshope Avenue, Hartford, CT 06106,
860-522-5000 ext 11
or email leasing@coltgateway.com

Hartford Attractions (continued from pg. 35)

See www.Hartford.com for listings of entertainment, restaurants & nightlife

own CBGBs" is located just around the corner from Trinity College in Hartford's South End. The architecture of the former movie theater is Art Deco, the music is rock from top acts and up-and-comers. 31 Webster Street, Hartford, 860-525-5553, webstertheater.com

XFINITY THEATRE: One of the largest amphitheatres in the country is located just minutes north of Downtown Hartford. The Xfinity has a total capacity 30,000 people (22,500 outdoors, 7,500 indoors) and hosts a mix of some of the top musical acts in the country, from Dave Matthews to Jason Aldine. 61 Savitt Way, Hartford, (203) 265-1501, hartfordtheatre.com.

XL CENTER: In addition to major sporting events, this 16,000 seat arena hosts a full schedule of major music concerts. Recent performers include Taylor Swift, Justin Timberlake, Elton John, Blake Shelton, Chris Bacon and many more. 1 Civic Center Plaza, Hartford, 860-249-6333, xlcenter.com

Theaters

HARTBEAT ENSEMBLE: Now in its 20th year, HartBeat is activist theater at its best. Many of the ensemble's plays are based on interviews with Hartford residents. HartBeat's home is the historic Carriage House Theater, located across the street from the former home of a Hartford resident who also liked to stir things up: Mark Twain. 360 Farmington Avenue, Hartford, 860-548-9144, hartbeatensemble.org

HARTFORD STAGE: This powerhouse theater presents both original productions and innovative revival of theatrical classics. Now in its 59th year, Hartford Stage has presented over 80 North American and world premiers. 50 Church St., Hartford, 860-527-5151, hartfordstage.org

PLAYHOUSE ON PARK: Located on bustling Park Road in West Hartford, Playhouse on Park strives to build community through theater. Productions are designed to be appealing, enlightening and affordable to a wide audience. 244 Park Rd., West Hartford, 860-523-5900, playhouseonpark.org

THEATERWORKS: Founded in 1985, TheaterWorks produces some of the most innovative and relevant theater in New England. In over three decades it has turned out over 150 plays. Located in a historic building in Downtown Hartford, TheaterWorks hosts approximately 225 performances annually. 233 Pearl St, Hartford, 860-527-7838, theaterworkshartford.org.

Sports Venues

DILLON STADIUM: Home of the Hartford Athletic professional soccer team. For information on tickets, go to hartfordathletic.com/tickets or contact the team at: 250 Huyshope Avenue, 860-216-0816; hartfordathletic.com



DUNKIN' DONUTS PARK: Home field of the Hartford Yard Goats minor league baseball team. The stadium also hosts numerous other events throughout the year. 1214 Main St., (860) 246-4628, www.milb.com/hartford/ballpark/ddp-navigation

Other Points of Interest

CONNECTICUT CONVENTION CENTER: Full-service facility accommodates meetings, conventions, banquets, trade shows, receptions and weddings. Located Downtown in the exciting river-front district, Adriaen's Landing. 100 Columbus Blvd., 860-249-6000, www.ctconventions.com



FRONT STREET DISTRICT: Dining and entertainment complex located in Adriaen's Landing, across from the Connecticut Convention Center. Features Apple Cinemas Luxury Dine-In Movie Theater, Infinity Music Hall Hartford, and a growing number of restaurants. 39 Front St., 860-527-0100, www.frontstreetdistrict.com

GOVERNOR'S RESIDENCE: Gracious Georgian Revival structure, built in 1909, home to Connecticut's First Families since 1945. Group tours by appt. on Tuesdays. Not open July or Aug. 990 Prospect Ave., 860-524-7355, portal.ct.gov/Office-of-the-Governor/About/Governors-Residence

To get the most comprehensive and most up-to-date info on Hartford events, go to hartford.com and click, "Where To Go."

Historic Hartford Landscapes and Buildings

Did you know?

The Bushnell Park was the first and oldest publicly funded park in the United States? The state capitol stands guard over the beautiful landscape. The Park has lush green lawns, is home to one of the first carousels in the country, and is a central hub for jazz festivals, fireworks display, and family gatherings.

It was not always this way. In 1850 the population of Hartford was multiplying. Hartford experienced growing pains, which brought poverty, poor sanitation, polluted water, and air. There was a push for clean spaces for people to play and relax.

Reverend Horace Bushnell solicited the idea of a publicly funded park. It took perseverance and planning, but the designer, Jacob Weidemann, finally planted trees and the green lawn after



Smile Studio Dentists visit Hartford City Hall

ten years, and the park came to life.

A hundred years later, another archi-

tect of design, I. M. Pei created the Bushnell Tower, a twenty-seven-story high modernist building. He is hailed genius of his day due to his high-profile designs, such as the Louvre in Paris. The building contains condos that overlook Bushnell Park and the Connecticut River. Bushnell tower has been added to the state registry of Historic places by the Connecticut historic preservation council.

Bushnell Tower is home to the Smile Studio Dentistry, a modern and newly renovated dental office. The office has floor-to-ceiling windows that look out into the park. If you are looking for a relaxing health facility with a piece of History, please give us a call at The Smile Studio (The Smile Studio, 1 Gold Street Suite 1Q, Hartford, CT 06103, Phone 860-728-5264)



Bloomfield

A diverse suburb north of Hartford, Bloomfield includes numerous parks and large open spaces perfect for hiking. *Incorporated: May, 1835; taken from Windsor. Total area: 26.2 sq. miles. Population: 20,525. Post office, Bloomfield. Rural free delivery. Town Hall, 800 Bloomfield Ave., P.O. Box 337, 06002-0337; Tel., Hartford, (860) 769-3500; FAX, (860) 769-3597. Website: www.bloomfieldct.org.*

Attractions

4-H Center at Auer Farm (158 Auer Farm Rd.) 120-acre farm. Seasonal education programs, picnic areas, gardens, animals. Some activities require advance reservations/fees. 860-242-7144, www.auerfarm.org

Back East Brewing Company (1296 Blue Hills Ave.) Family-owned craft brewery that hosts tours and special tastings. 860-242-1793, www.backeastbrewing.com

Fannie Gabriel History Center of the

Wintonbury Historical Society (153 School St., Rt. 178) Museum and library. Local genealogical records. Open most Monday afternoons. Please call for an appointment. 860-243-1531, www.bloomfieldcthistory.org

Filley Park (Located in Town Center, west of Tunxis Avenue) "The Jewel of Bloomfield" is a recently renovated compact park with a stream and pond.

Gillette Ridge Golf Club (1360 Hall Blvd.) 860-726-1430, gilletteridgegolf.com

Old Farm School (151 School St., corner of Park Ave. Rt. 178) Two-story schoolhouse built in 1796. Open Sunday afternoons from 1 – 4 from May 15 through October 15. 860-242-1531, www.bloomfieldcthistory.org

Penwood State Park (560 Simsbury Rd.) Mountain bike accessibility. 860-424-3200. www.ct.gov/deep/penwood

Thomas Hooker Brewing Company (16 Tobey Rd.) Microbrewery produces



Bloomfield's Old Farm School.

award-winning craft-brewed beer. Open Sunday - Wednesday, 12-8 pm; Thursday-Saturday, 12-9 pm. 860-242-3111, www.hookerbeer.com

Waypoint Spirits (410 Woodland Ave.) Handcrafted distillery of vodka, gin, whisky and rum. Tours and tastings. 860-860-904-6583, www.drinkwaypoint.com

Wintonbury Hills Golf Course (206 Terry Plains Rd.) 860-242-1401, www.wintonburyhillsgolf.com




Connecticut Pediatrics @CHC

76 New Britain Ave | 860.547.0970

We keep Hartford's Kids healthy!
Offering pediatric medical, behavioral health and dental services.



www.chc1.com



BLOOMFIELD PUBLIC LIBRARY

Library Cards are FREE

bplct.org

BLOOMFIELD PUBLIC LIBRARY

Prosser Library
1 Tunxis Avenue | (860) 243-9721

McMahon Wintonbury Library
1015 Blue Hills Avenue | (860) 242-0041

East Hartford

Located across from Hartford and connected to it by three bridges, East Hartford is home of Pratt & Whitney Aircraft and Rentschler Field, home of the UCONN Huskies football team. *Incorporated: Oct., 1783; taken from Hartford. Total area: 18.8 sq. miles. Population: 51,318. Post office, East Hartford Main, Silver Lane. Town Hall, 740 Main St., 06108-3114; Tel., Hartford, (860) 291-7230; FAX, (860) 291-7238. Website: www.easthartfordct.gov.*

Attractions

Cabela's (475 East Hartford Blvd. North) Next to Rentschler Field stadium. 185,000-sq.-ft. retail showroom, educational/entertainment attraction with huge aquariums and trophy animals in recreations of natural habitats. 860-290-6200, www.cabelas.com

East Hartford Cultural Center (50 Chapman Pl.) Host to numerous cultural

and community events. To reserve space, call 860-291-7160, www.easthartfordct.gov/parks-recreation/pages/community-cultural-center

Great River Park (East River Dr. near Hartland St.) Park has something for everyone – 350-seat amphitheater, public art display, boat docking, picnicking, playgrounds and fishing. 860-713-3131, www.riverfront.org

Huguenot House/East Hartford Historical Society (307 Burnside Ave.) Restored home of colonial saddlemaker, gambrel roof, vaulted dormer windows. Ask about friendly ghost. Also, 1820 one-room Goodwin School House and 1850 Burnham Blacksmith Shop. Call for hours. 860-528-0716, www.hseh.org

Lincoln Financial Sculpture Walk at Riverfront (On the banks of the Connecticut River) Award-winning sculptures reflecting the life and values



CT Fallen Star Veterans Memorial, Goodwin Collge.

of Abraham Lincoln. Free. 860-713-3131, www.riverfront.org

East Hartford Golf Club & One Wood Pub Restaurant, (130 Long Hill St.) 18-hole course. Reasonable rates. 860.616.6649, www.theonewoodpub.com

Rentschler Field (615 Silver Ln.) 40,000-seat sports & entertainment stadium. Home to UConn Huskies football, concerts, special events and more. 860-610-4700, www.rentschlerfield.com



[instagram.com/blackdiamondCT](https://www.instagram.com/blackdiamondCT)



[facebook.com/blackdiamondCT](https://www.facebook.com/blackdiamondCT)



HOURS:
Monday – Friday
12-8pm
Saturday
11-7pm

Black Diamond Body Piercing



Newington

A small, quiet suburb, Newington is adjacent to Hartford, West Hartford and New Britain, giving easy access to jobs, dining and cultural resources and activities. Newington Center has a charming variety of shops and eateries. In addition, numerous retail shops and restaurants line the Berlin Turnpike, which runs through the west side of town. *Incorporated July 10, 1871; taken from Wethersfield. Total area: 13.2 sq. miles. Population: 30,599. Post office: Newington. Rural free delivery. Town Hall: 131 Cedar St., 06111-2644; Tel., (860) 665-8545; FAX, (860) 665-8551. Website: www.newingtonct.gov.*

Attractions

American Radio Relay League (ARRL) (225 Main St.) The Center of U.S. Amateur ("ham") Radio since 1914. Learn about ham radio, visit W1AW flagship station. Free tours Mon.-Fri. 9am-3pm. 860-594-0200, www.arrl.org

Callahan's Bowl-O-Rama (2143 Berlin Tpke.) Great family fun, birthday parties, get togethers, leagues. 860-666-5411, www.bowloramact.com

Enoch Kelsey House (1702 Main St.) Built in 1799 by Enoch Kelsey, noted for trompe l'oeil wall paintings, free-hand-painted wall designs which imitate

wallpaper. Open for tours by appointment. Call 860-666-7118

Kellogg-Eddy House (679 Willard Ave.) Built in 1808 for Gen. Martin Kellogg. New England interpretation of Georgian-style house noted for Greek Revival design influences. Open for tours by appointment. 860-666-7118

Mill Pond Park (123 Garfield Street) Contains Mill Pond Falls, billed as the smallest natural waterfall in the country – as well as a basketball court, two soccer fields, a boundless playground, a fishing pond for children under 16, a baseball field, an outdoor pool and a walking nature trail. (860) 665-8666

National Iwo Jima Memorial Monument (Ella Grasso Blvd.) This monument is the only one in the world built by Iwo Jima Survivors. It is dedicated to the 100 CT men who lost their lives in the Battle of Iwo Jima and the 6,821 Americans who died in the battle. The monument is 40 feet high, and flies a 48-star American flag to make the statue historically correct. For more information, please email to: contact@iwojimamemorial.org or write to Iwo Jima Survivors Assoc., P.O. Box 310516, Newington, CT 06111.

Newington Children's Theatre Company (743 North Mountain Rd.)



Iwo Jima Memorial in Newington

Performing arts, cultural and educational experiences for young people. Theatrical performances for public. 860-666-NCTC, www.nctcarts.org

Newington Ice Arena (300 Alumni Rd.) Year-round, full-service, twin ice skating rink facility. Figure-skating and hockey public programs for entire family. 860-665-7825, www.newingtonarena.com

Proud supporters of the mid-life crisis.

WETHERSFIELD INVESTMENT CENTER
A DIVISION OF BRP/GRENIER

WHEREVER LIFE LEADS YOU, WE HAVE THE MAP.
860-721-7880
265 Main Street
Wethersfield, CT 06109
brpgrenier.com

Securities offered through Cadaret Grant & Co., Inc. member FINRA/SIPC. BRP/Grenier Financial Services and Cadaret Grant are separate entities. Registered Representatives: R. Patricia Grenier, CFP® • Michael Simpson ©2018 BRP/Grenier Financial Services. All rights reserved.

NA
Newington Ice Arena
300 Alumni Rd. Newington, CT 06111
www.NewingtonArena.com

The COOLEST Place in Connecticut

Public Skating
Birthday Parties
Learn to Skate
Figure Skating
Hockey
Group Outings
Fundraisers

Friday Night Ice Jam
Every Friday Night at 7pm
- Public skating with the lights off
- Music playing
- Laser lights

Open 7 days a week - 860.665.7825 - info@newingtonarena.com

Wethersfield

Founded in 1634 by a group of 10 Puritans from Massachusetts, Wethersfield is recognized as the second-oldest town in Connecticut, after Windsor (although many Wethersfield residents will argue it's the other way around!). *Settled, 1634; incorporated May, 1822. Total area: 13.1 sq. miles. Population: 26,695. Mill rate: 36.74. Town Hall, 505 Silas Deane Hwy., 06109-2216; Tel., 860-721-2880; FAX, 860-721-2994. Website: www.wethersfieldct.com.*

Attractions

Buttolph-Williams House (249 Broad St.) Built around 1715, house reflects popularity of traditional architecture imported from England with diamond-paned windows and hewn overhangs. 860-529-0612, www.webb-deane-stevens.org

Cove Warehouse (North end of Main St.) Ancient warehouse features maritime exhibits. Mid-May to mid-Oct. 860-529-7656. www.wethersfieldhistory.org

Eleanor Buck Wolf Nature Center (156 Prospect St.) Ecology education center with exhibits, animals, library, and park. Tue.-Sat. 860-529-3075, www.ebwnaturecenter.org

Historic Wethersfield (Exit 26 off I-91) Also known as "Old Wethersfield." Quaint shops and museums in historic buildings. Restaurants, museums, bed & breakfasts, art galleries, antiques, jewelry, travel agency. 860-529-7656, www.wethersfieldhistory.org

Hurlbut-Dunham House Museum (212 Main St.) Elegant brick Georgian, renovated in Italianate style in 1860s. Mid-May to mid-Oct. on Sat. & Sun. Admission: \$5 for over age 16. 860-529-7656, www.wethersfieldhistory.org

Old Academy Genealogical & Research Library (150 Main St.) Research town history and genealogy. Tue.-Fri. 10am-4pm. 860-529-7656, www.wethersfieldhistory.org



Wethersfield Museum at Keeney Memorial Cultural Center

Webb-Deane-Stevens Museum (211 Main St.) Encounter the charm, hardship and political intrigue of the 18th-19th centuries. 860-529-0612, www.webb-deane-stevens.org

Wethersfield Museum at Keeney Memorial Cultural Center (200 Main St.) Features permanent and changing exhibits, gift shop. Tue.-Sat. 10am-4pm, Sun. 1pm-4pm. 860-529-7161, www.wethhist.org

DISCOVER



Historic Wethersfield

Tour a museum or two. Browse shops on the picturesque Main Street. Stroll by 150 historic homes. Picnic by the Cove. Eateries with delicious food at unique locations. Discover this year-round museum of living history.

historicwethersfield.org



Walk / Ride along
Broad Street Green

Cove 1690 Warehouse Maritime Museum



Visit our website for upcoming events including Holidays on Main, a new Maritime Exhibit, Music, Lectures, Art Classes and ongoing events throughout the year.

Visit: historicwethersfield.org or call: 860.721.2939



West Hartford

With a population of approximately 63,000, West Hartford is one of the largest cities in Connecticut and has a nationally-known public school system. Several areas are also regional destinations for dining and shopping, including Elmwood Center, Bishops Corner, Westfarms Mall, West Hartford Center and Park Road. *Incorporated May, 1854; taken from Hartford. Total area: 22.4 sq. miles. Population: 63,362. Town Hall, 50 So. Main St., Rm. 313, 06107; Tel., Hartford, (860) 561-7430; FAX, (860) 561-7438. Website: www.westhartford.org.*

Attractions

Joseloff Gallery of the Hartford Art School (Harry Jack Gray Center at University of Hartford, 200 Bloomfield Ave.) Artist, student and faculty exhibitions throughout year. 860-768-4090, www.joseloffgallery.org

New Children's Museum (950 Trout Brook Dr.) Wildlife sanctuary, planetari-

um, hands-on experiences. 860-231-2824, www.TheChildrensMuseumCT.org

Noah Webster House/West Hartford Historical Society (227 South Main St.) Birthplace of the creator of first American dictionary. Tours, educational programs, exhibits, shop. 860-521-5362, www.noahwebsterhouse.org

Rockledge Golf Club (289 South Main St.) One of the finest 18-hole public golf courses in the Northeast region. 860-561-8280, www.golfrockledge.com

Sarah Whitman Hooker Homestead (1237 New Britain Ave.) Three periods of early Connecticut domestic architecture, 1720-1830. 860-523-5887, www.sarahwhitmanhooker.com

University of Saint Joseph Art Gallery (1678 Asylum Ave.) Open year-round with changing exhibitions and a permanent collection of over 2,000 artworks. 860-231-5399, www.usj.edu/artgallery



Hall's Market has been a fixture on Park Road in West Hartford since 1935.

Veterans Memorial Skating Rink (56 Buena Vista Rd.) Skate rentals. 7 days/week year-round. 860-521-1573, www.skatevmsr.com

West Hartford Art League (37 Buena Vista Rd.) Regional art center. Monthly exhibits of local, regional artists. 860-231-8019, www.westhartfordart.org

Westmoor Park (119 Flagg Rd.) Environmental education center and demonstration farm with nature trails. 860-561-8260, www.westmoorpark.org

Windsor

In 1634, a party of around 30 people, sponsored by Sir Richard Saltonstall, and led by the Stiles brothers, Francis, John and Henry, settled in the Windsor area, making it the first English settlement in the state. Windsor once included all or part of the following towns: Windsor Locks, South Windsor, East Windsor, Ellington, and Bloomfield. *Settled, Sept. 26, 1633; named, Feb., 1637. Total area: 31.1 sq. miles. Population: 29,060. Post offices: Windsor and Poquonock. Mill rate: 30.47. Town Hall, 275 Broad St., P.O. Box 472, 06095-0472; Tel., (860) 285-1902; FAX, (860) 285-1909. www.townofwindsorct.com.*

Attractions

Luddy/Taylor Connecticut Valley Tobacco Museum (135 Lang Rd. in Northwest Park) History/artifacts of cigar tobacco growing in region. Old equipment, tobacco shed, pictures, literature, films. March to mid-Dec.: Thur. - Sat, 12-4. Free. 860-285-1888, tobaccohistsoc.org

Northwest Park & Nature Center (145 Lang Rd.) 473 acres of woodlands/wetlands. Nature center, live animals, hiking, cycling, cross-country skiing & snowshoeing rentals, maple syrup house. 860-285-1886, northwestpark.org

Oliver Ellsworth Homestead (778 Palisado Ave.) Home of famous Revolutionary patriot, jurist, statesman, and framer of U.S. Constitution. Built in 1780. 860-688-8717, ellsworthhomesteadad.org

Vintage Radio & Communications Museum of CT (115 Pierson Ln.) Dedicated to preservation and history of old-time communications equipment: radios, TVs, telephones, more. 860-683-2903, vrcmct.org

Windsor Art Center at the Freight House (40 Mechanic St.) Visual and performing arts. Gallery is free. Gift shop has locally made art. 860-688-2528, windsorartcenter.org



Windsor shade tobacco farm.

Windsor Center River Trail (Rt. 159, Downtown) Stroll along the Windsor Center River Trail located on a 43-acre site on the Farmington River. Cyclists and roller bladers welcome. townofwindsorct.com

Windsor Historical Society (96 Palisado Ave.) Two historic houses, exhibition galleries, family learning center, research library, museum gift shop. Year-round: Weds.-Sat. 11am-4pm. 860-688-3813, www.windsorhistoricalsociety.org



HARTFORD

EAST HARTFORD

NEWINGTON

WETHERSFIELD



Greater Hartford Accommodations

	# of Rooms	Pet Friendly	Bar/Lounge	Restaurant	Fitness Center	Indoor/Outdoor Pool	Conference Capacity	Complimentary Parking	Complimentary Breakfast
WEST HARTFORD									
Delamar Hotel 1 Memorial Rd. 06107, 860-937-2500, delamar.com/west-hartford	102	•	•	•	•		300	•	•
WINDSOR									
Courtyard by Marriott (Hartford/Windsor) 1 Day Hill Rd., 860-683-0022, www.courtyardhartfordwindsor.com	149		•	•	•	In	40	•	
Hampton Inn (Hartford/Airport) 2168 Poquonock Ave., 860-683-1118, www.hamptoninnhartford.com	110				•	In	30	•	•
Hartford/Windsor Marriott Airport Hotel 28 Day Hill Rd., 860-688-7500, www.hartfordairportmarriott.com	295		•	•	•	In	600	•	
Hilton Garden Inn Hartford North/Bradley Intl. Airport 555 Corporate Dr., 860-688-6400, www.windsor.hgi.com	157	•	•	•	•	In	240	•	
HYATT house (Hartford North/Windsor) 200 Corporate Dr., 860-298-8000, www.hyatthousehartfordnorth.com	132	•			•	In	60	•	•
Residence Inn by Marriott (Hartford/Windsor) 100 Dunfey Ln., 860-688-7474, www.residenceinn.com	96	•			•	Out		•	•

HARTFORD FLAVOR COMPANY

TASTE OUR NEW VODKA LINE!

BOOK YOUR TOUR NOW
* HARTFORDFLAVOR.COM *



**CT's premier
destination for sports
& entertainment**



The 16,000+ seat downtown arena is home to the eleventh-time National Champion UConn Women's Basketball team and the four-time National Champion UConn Men's Basketball team as well as the UConn Men's Ice Hockey. The XL Center is also home to the Hartford Wolf Pack, the American Hockey League affiliate of the New York Rangers. The XL Center entertains millions of visitors annually with a variety of concerts, family shows, ice-skating spectacles, consumer events and trade shows throughout the season. The venue has played host to an extraordinary roster of world-renowned artists, including Taylor Swift, Justin Timberlake, Bruce Springsteen, Billy Joel, Pearl Jam, Black Eyed Peas, Britney Spears, Drake, and many others. The XL Center will continue to be the center of sports and entertainment for Hartford and the state of Connecticut for years to come.

www.xlcenter.com | 1 Civic Center Plaza, Hartford, CT 06103 | (860) 249-6333

Upcoming Events

PLAYBOI CARTI: King Vamp
December 14, 2021

The Harlem Globetrotters
December 26, 2021

**Disney On Ice presents
Mickey's Search Party**
January 6 - 9, 2022

Monster Jam
March 19 - 20, 2022

TobyMac Hits Deep Tour
March 29, 2022



100 Columbus Boulevard
Hartford, CT 06103
(860) 249-6000
www.ctconventions.com

UPCOMING SHOWS

JENKS BRIDAL SHOWJAN. 8 & 9

RV & CAMPING SHOWJAN. 28, 29 & 30

CT KIDS FAIRFEB. 5 & 6

CT GOLF SHOWFEB. 18,19 & 20

CT FLOWER & GARDEN SHOW.....FEB. 24, 25 26 & 27

CT HOME & REMODELING SHOWMARCH 4, 5 & 6

90'S CON.....MARCH 11, 12 & 13

Getting Around Greater Hartford

Whether you want to go around the block or around the world, Greater Hartford has a wide variety of transportation options.



Bradley International Airport (BDL)
BradleyAirport.com

- Located in Windsor Locks, just 12 miles from Hartford
- Airlines include Aer Lingus, American Airlines, American Eagle, Delta, Jet Blue, Southwest & United Airlines
- Car rental & taxi services available
- Public transportation connects BDL and Hartford (see Bradley Flyer)



CTtransit

www.cttransit.com

Over 30 local and 13 express bus routes. Many local routes operate 7 days a week, serving 26 towns in the Capital Region. Express service primarily operate weekdays only, with service 7 days a week on the 913 (Storrs) and 928 (Waterbury) express routes.



Bradley Flyer
by CTtransit

www.cttransit.com/services/bradley-flyer or call 860-525-9181

Semi-express bus service to Bradley International Airport for a low local bus fare. The Bradley Flyer provides direct service to the Connecticut Convention Center and Union Station in Hartford. The trips operate approximately hourly between downtown Hartford and all the terminals at the airport, seven days a week.



CTfastrak
by CTtransit

www.cttransit.com/services/ctfastrak

Connecticut's first Bus Rapid Transit system. It is a system of bus routes that utilize a bus-only roadway for all or a portion of your trip. CTfastrak routes are integrated with the CTtransit system, making it easy to connect, transfer and pay your fare.



Car Services

- Taxi fare from BDL is approximately \$45.00
- Car rental is available at the airport and in Downtown Hartford
- Livery service is approximately \$80. Numerous companies serve the Greater Hartford region.
- Uber: inexpensive transportation for up to 4 people. Go to the website: www.uber.com/ride.
- Lyft: Serves Bradley Airport and the region. Go to the website: www.lyft.com/cities/hartford-ct.



Hartford Parking Authority

11 Asylum St., Hartford
hartfordparking.com

- MAT Garage, 20 Church Street, Hartford
- 58 Chapel Street Lot, Hartford
- Hartford Public Library, 500 Main Street, Hartford
- On-street metered parking (see page 30)



Union Station Hartford (HFD)

*hartfordtransit.org/
unionstation.html*

- Located in Downtown Hartford
- Services Amtrak, Bonanza, Greyhound, Peter Pan and others
- Taxi service available
- Hertz car rentals available
- Connections to CTtransit local bus routes



Brainard Airport
*ctairports.org/airports/
hartford-brainard/*

- Hartford Jet Center (FBO, Air Charter, Aircraft Sales and Detailing) hfdjet.com, (860) 548-9334
- Enterprise Rent a Car: www.enterprise.com/ga, (860) 296-2511
- Pegasus Air Charter (Passenger Air Service): pegasusaircharter.com, (860) 670-8593



Valley of Hartford

Ancient Accepted Scottish Rite

An Appendant Body of The Ancient Free and Accepted Masons

Please Visit us at www.valleyofhartford.org

We are a private fraternal organization that promotes personal growth. Our teachings and core values build on the principles of freemasonry.

FEATURED PROGRAMS:

Philanthropic

We plan, organize, and host events that contribute directly to our local communities.

Family Life

We plan, organize, and host events that contribute to our members families and their well being.